

FLANGED BALL VALVE SERIES

法兰球阀系列

球阀和闸阀是同属一个类型的阀门，区别在它的关闭件是个球体，球体绕阀体心线作旋转来达到开启、关闭的一种阀门。球阀在管路中主要用来做切断、分配和改变介质的流动方向。

Ball valve and gate valve are the same type of valve, the difference is that its closing part is a sphere, and the sphere rotates around the center line of the valve body to achieve opening and closing. Ball valves are mainly used to cut off, distribute and change the flow direction of the medium in the pipeline.



国标化工部
高平台球阀
National Standard Chemical Industry
Department High Platform Ball Valve
Q41F-16P

技术要求

1. 阀门的设计与制造按GB/T 12237的规定。
2. 阀门的结构长度按GB/T 12221的规定。
3. 阀门的连接法兰按HG/T 20592的规定。
4. 阀门的检验与试验按GB/T 26480的规定。

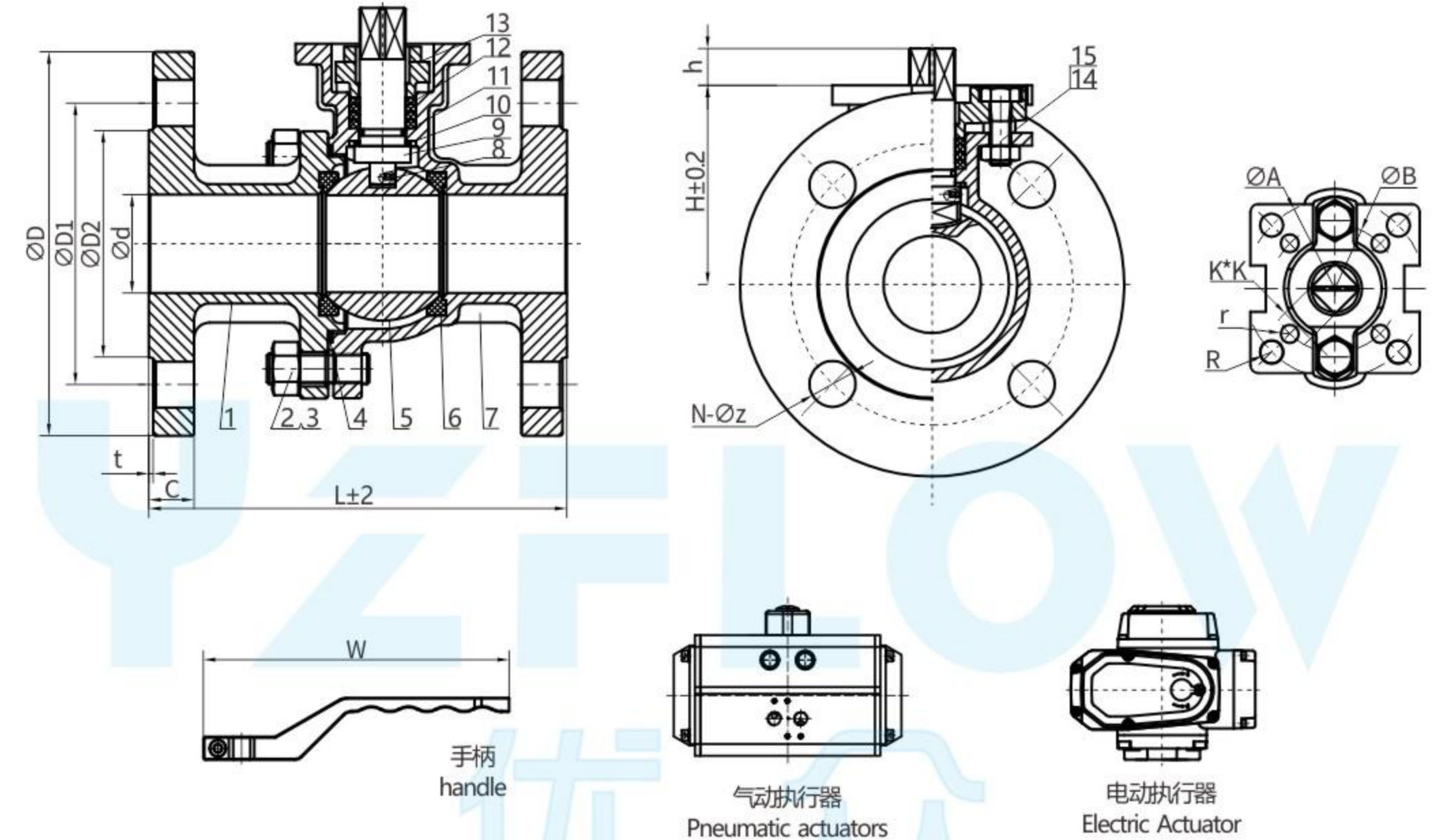
Technical requirements

1. The design and manufacture of the valve are in accordance with the provisions of GB/T 12237.
2. The structural length of the valve is in accordance with the provisions of GB/T 12221.
3. The connecting flange of the valve is in accordance with the regulations of HG/T 20592.
4. The inspection and test of the valve shall be in accordance with the provisions of GB/T 26480.

性能规范
Performance Specifications

公称压力 Nominal pressure		PN16		公称通径 Nominal diameter		DN15-200	
试验压力 Test pressure	强度试验 Strength test	2.4	Mpa	试验介质 Test medium	水 Water	试验温度 Test temperature	常温 Normal Temperature
	高压密封试验 High pressure sealing test	1.8			空气 Air		
	低压密封试验 Low pressure sealing test	0.6					
适用介质 Applicable media		水 油品等 water oil etc					
最高工作温度 Maximum operating temperature		-29~120°C					

序号 Number	代号 Code	名称 Name	数量 Quantity	材料 Material	重量 Weight	备注 Remark
1	Q41F-16P-01	阀盖 cap		A351 CF8/CF8M	单件 single piece	总计 total
2	GB/T901-1988	双头螺栓 Stud		SS304		标准件 Standard parts
3	GB/T6170-2000	螺母 nut		SS304		标准件 Standard parts
4	Q41F-16P-02	密封线 sealing line		PTFE		
5	Q41F-16P-13	球体 sphere		SS304/SS316		
6	Q41F-16P-04	密封圈 sealing ring		PTFE		
7	Q41F-16P-05	阀体 valve body		A351 CF8/CF8M		
8	Q41F-16P-23	防静电弹簧钢珠 Anti-static spring steel ball		SS304/SS316		
9	Q41F-16P-03	阀杆 stem		SS304/SS316		
10	Q41F-16P-07	减磨垫 Anti-wear pads		PTEF		
11	GB/T3452	O型圈 O-ring		NBR/VITON		
12	Q41F-16P-15	填料 filler		PTFE		
13	Q41F-16P-11	压盖 gland		A351 CF8		
14	GB/T5780-2000	六角头螺栓 Hexagon head bolts		SS304		标准件 Standard parts
15	GB/T6170-2000	螺母 nut		SS304		标准件 Standard parts



尺寸 Dimensions

Unit:mm

SIZE	d	D	D1	D2	C	t	L	H	W	A	B	R	r	K*K	h	N-φz
1/2"	15	95	65	45	16	2	130	50	140	50	36	3.5	3	9*9	9	4-φ14
3/4"	20	105	75	58	18	2	130	54	140	50	36	3.5	3	9*9	9	4-φ14
1"	25	115	85	68	18	2	140	61	170	70	50	4.5	3.5	11*11	11	4-φ14
1 1/4"	32	140	100	78	18	2	165	74	170	70	50	4.5	3.5	11*11	11	4-φ18
1 1/2"	40	150	110	88	18	3	165	78	200	70	50	4.5	3.5	14*14	14	4-φ18
2"	50	165	125	102	20	3	203	82	200	70	50	4.5	3.5	14*14	14	4-φ18
2 1/2"	65	185	145	122	18	3	222	112	300	102	70	5.5	4.5	17*17	17	8-φ18
3"	80	200	160	138	20	3	241	120	300	102	70	5.5	4.5	17*17	17	8-φ18
4"	100	220	180	158	20	3	305	144	300	102	70	5.5	4.5	17*17	17	8-φ18
5"	125	250	210	188	22	3	356	178	650	125	102	7	6	22	23	8-φ18
6"	150	285	240	212	22	3	394	195	800	125	102	7	6	27	28	8-φ22
8"	200	340	295	268	24	3	457	253	800	140	125	9	7	27	28	12-φ22

国标机械部
高平台球阀

National Standard Machinery Department
High Platform Ball Valve

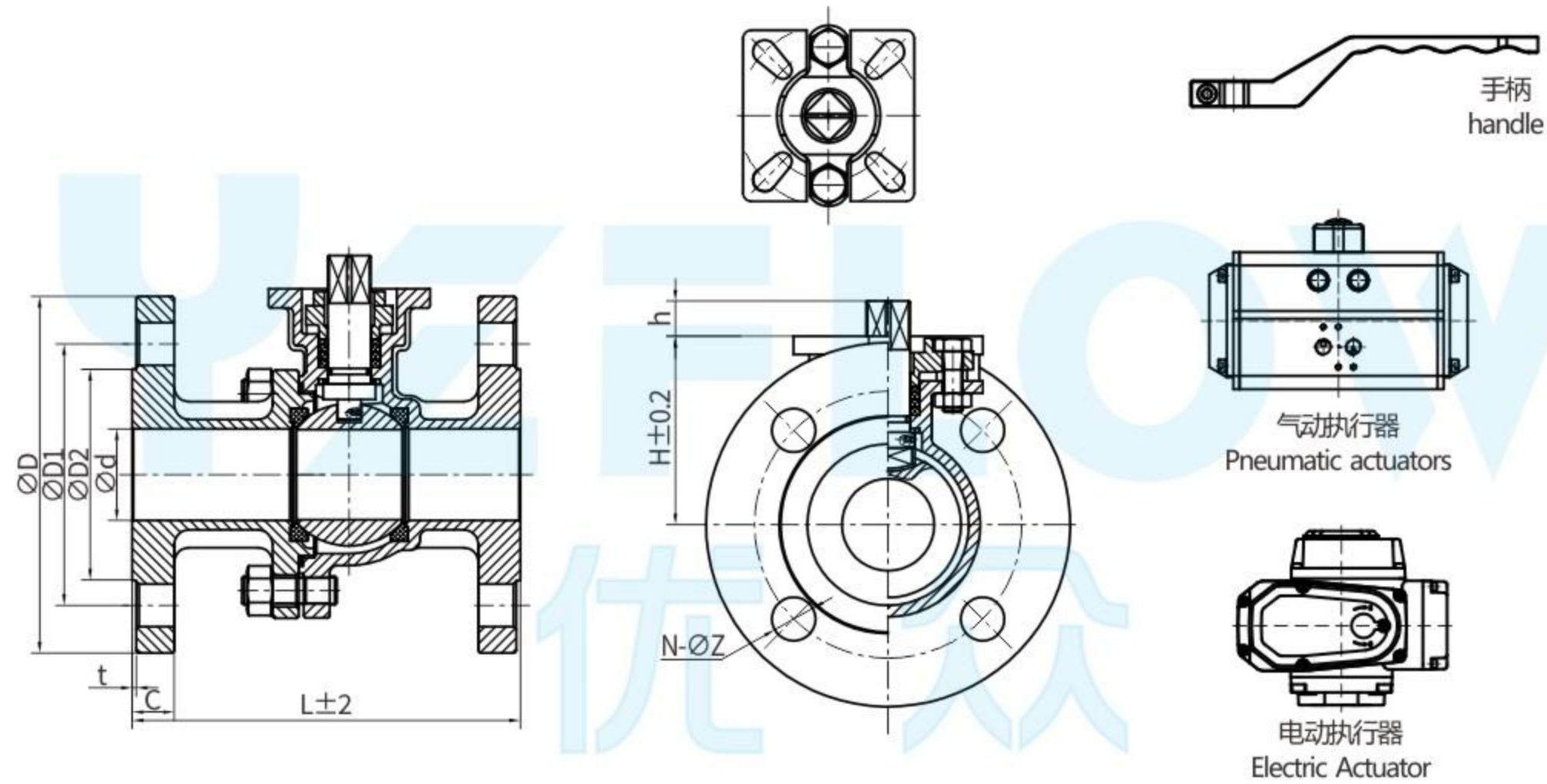
Q41F-16P

技术要求

1. 阀门的设计与制造按GB/T 12237的规定。
2. 阀门的结构长度按GB/T 12221的规定。
3. 阀门的连接法兰按GB/T 79的规定。
4. 阀门的检验与试验按GB/T 26480的规定。

Technical requirements

1. The design and manufacture of the valve are in accordance with the provisions of GB/T 12237.
2. The structural length of the valve is in accordance with the provisions of GB/T 12221.
3. The connecting flange of the valve shall be in accordance with the provisions of GB/T 79.
4. The inspection and test of the valve shall be in accordance with the provisions of GB/T 26480.



尺寸 Dimensions

Unit:mm

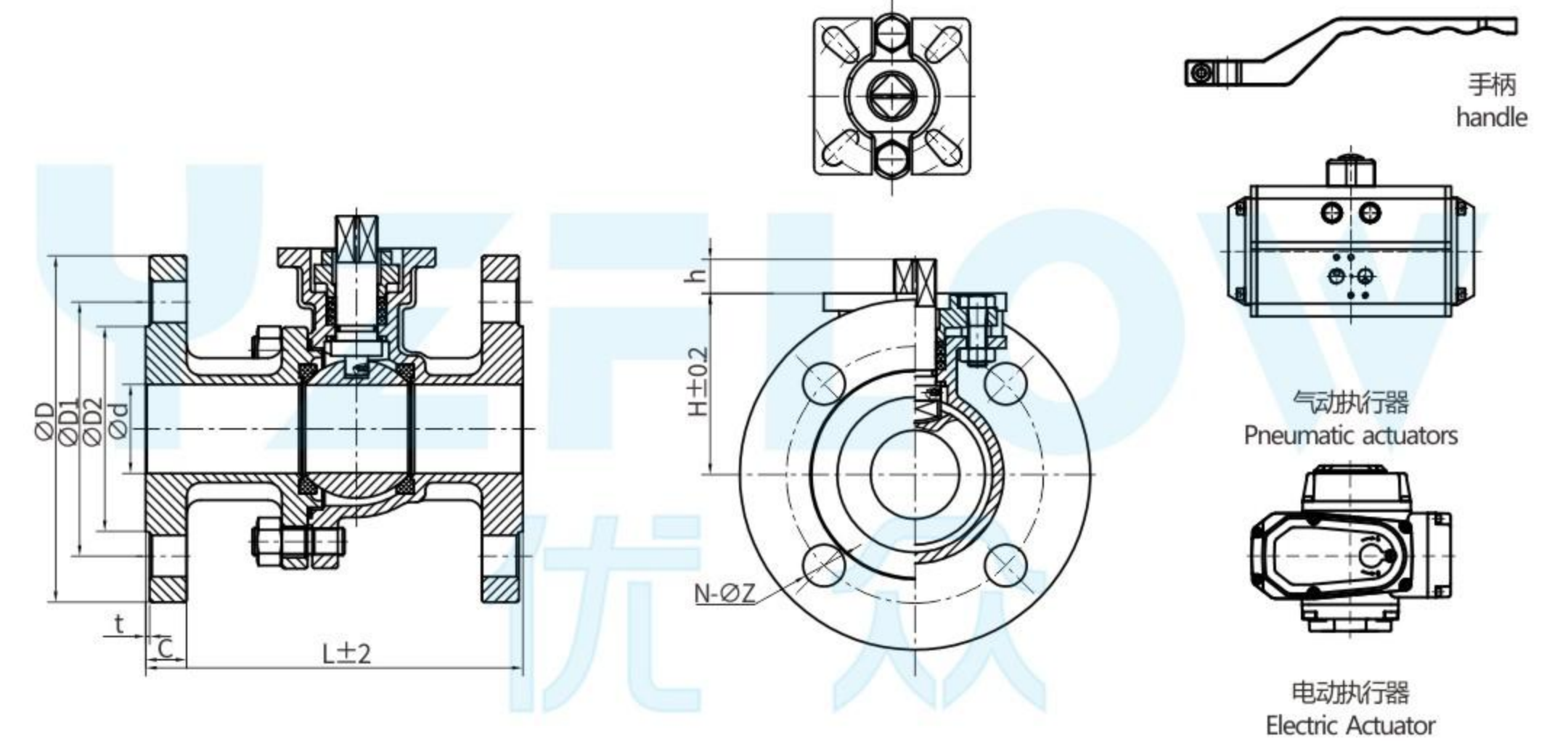
SIZE	d	D	D1	D2	C	t	L	H	W	A	B	R	r	K*K	h	N-φz
1/2"	15	95	65	45	14	2	130	51	140	50	36	3.5	3	9*9	9	4-φ14
3/4"	20	105	75	55	14	2	140	56	140	50	36	3.5	3	9*9	9	4-φ14
1"	25	115	85	65	14	2	150	62	170	70	50	4.5	3.5	11*11	11	4-φ14
1 1/4"	32	135	100	78	16	2	165	72	170	70	50	4.5	3.5	11*11	11	4-φ18
1 1/2"	40	145	110	85	16	3	180	78	200	70	50	4.5	3.5	14*14	14	4-φ18
2"	50	160	125	100	16	3	200	86	200	70	50	4.5	3.5	14*14	14	4-φ18
2 1/2"	65	180	145	120	18	3	220	102	300	102	70	5.5	4.5	17*17	17	4-φ18
3"	80	195	160	135	20	3	250	115	300	102	70	5.5	4.5	17*17	17	8-φ18
4"	100	215	180	155	20	3	280	137	300	102	70	5.5	4.5	17*17	17	8-φ18
5"	125	245	210	188	22	3	320	175	650	125	102	7	6	22	23	8-φ18
6"	150	280	240	212	24	3	360	208	800	125	102	7	6	27	28	8-φ23
8"	200	335	295	268	26	3	400	252	800	140	125	9	7	27	28	12-φ23

技术要求

1. 阀门的设计与制造按ANSI B16.34的规定。
2. 阀门的结构长度按ASME B16.10的规定。
3. 阀门的连接法兰按ASME B16.5的规定。
4. 阀门的检验与试验按API598的规定。

Technical requirements

1. The design and manufacture of the valve are in accordance with the provisions of ANSI B16.34.
2. The structural length of the valve is in accordance with the regulations of ASME B16.10.
3. The connecting flange of the valve shall comply with the regulations of ASME B16.5.
4. The inspection and test of the valve shall be in accordance with the provisions of API598.



尺寸 Dimensions

Unit:mm

SIZE	d	D	D1	D2	C	t	L	H	W	A	B	R	r	K*K	h	N-φz
1/2"	15	90	60.5	35	10	2	108	51	140	50	36	3.5	3	9*9	9	4-φ16
3/4"	20	100	70	43	11	2	117	56	140	50	36	3.5	3	9*9	9	4-φ16
1"	25	110	79.5	51	12	2	127	62	170	70	50	4.5	3.5	11*11	11	4-φ16
1 1/4"	32	115	89	63.5	13	2	140	72	170	70	50	4.5	3.5	11*11	11	4-φ16
1 1/2"	40	125	98.5	73	15	2	165	78	200	70	50	4.5	3.5	14*14	14	4-φ16
2"	50	150	120.5	92	17	2	178	86	200	70	50	4.5	3.5	14*14	14	4-φ19
2 1/2"	65	180	140	105	18	2	190	102	300	102	70	5.5	4.5	17*17	17	4-φ19
3"	80	190	152.5	127	20	2	203	115	300	102	70	5.5	4.5	17*17	17	4-φ19
4"	100	230	190.5	157	24	2	229	137	300	102	70	5.5	4.5	17*17	17	8-φ19
5"	125	255	216	186	24	2	356	175	650	125	102	7	6	22	23	8-φ22
6"	150	280	241.5	216	26	2	394	208	800	125	102	7	6	27	28	8-φ22
8"	200	345	298.5	267	29	2	457	252	800	140	125	9	7	27	28	8-φ22

美标(标准法兰) 高平台球阀 American standard (standard flange) High platform ball valve Q41F-150LB

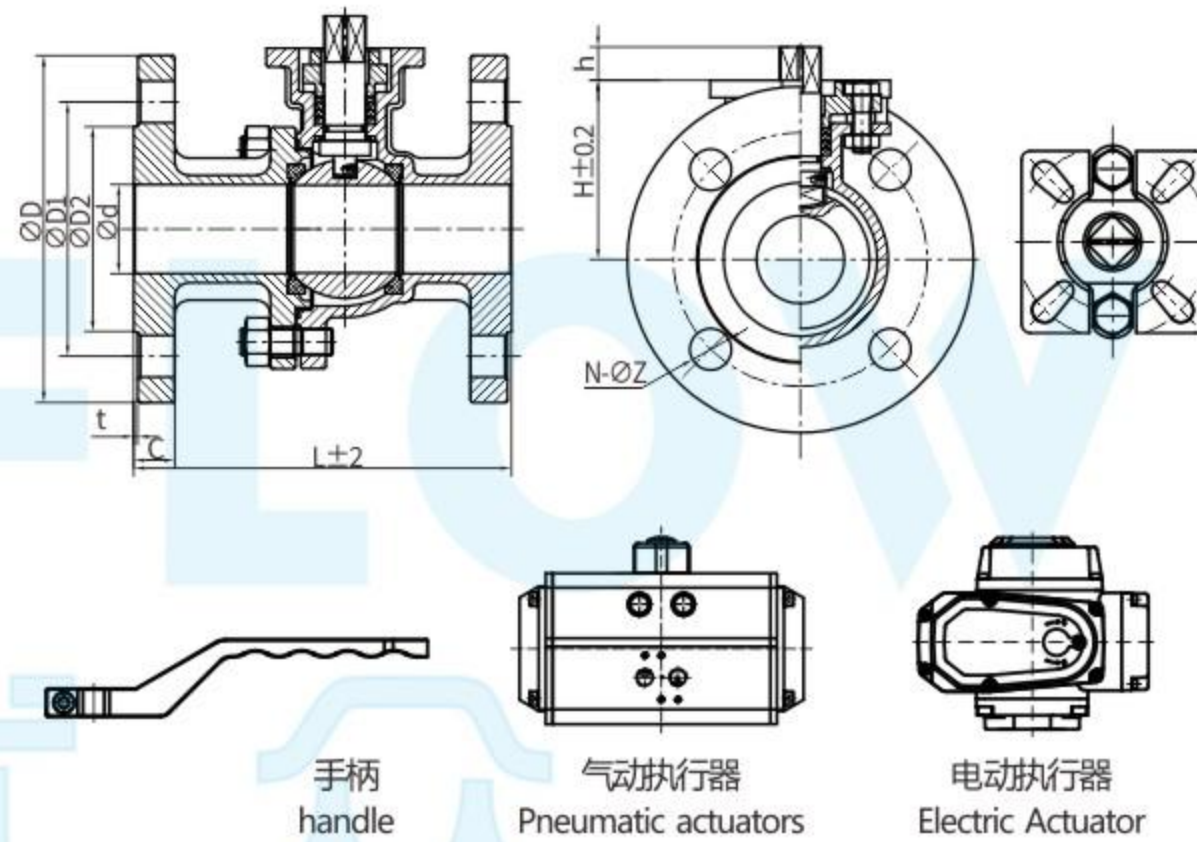
技术要求

1. 阀门的设计与制造按ANSI B16.34的规定。
2. 阀门的结构长度按ASME B16.10的规定。
3. 阀门的连接法兰按ASME B16.5的规定。
4. 阀门的检验与试验按API598的规定。

Technical requirements

1. The design and manufacture of the valve are in accordance with the provisions of ANSI B16.34.
2. The structural length of the valve is in accordance with the regulations of ASME B16.10.
3. The connecting flange of the valve shall comply with the regulations of ASME B16.5.
4. The inspection and test of the valve shall be in accordance with the provisions of API598.

性能规范 Performance Specifications		公称压力 Nominal pressure		150LB	
公称通径 Nominal diameter		1/2"-8"			
试验压力 Test pressure	强度试验 Strength test	3.0	Mpa	试验介质 Test medium	水 Water
	密封试验 Seal test	2.2			
	气密封试验 Air tightness test	0.6			
适用介质 Applicable media		水、油品等 water oil etc		试验温度 Test temperature	
最高工作温度 Maximum operating temperature		-29~120°C		常温 Normal Temperature	



尺寸 Dimensions

Unit:mm

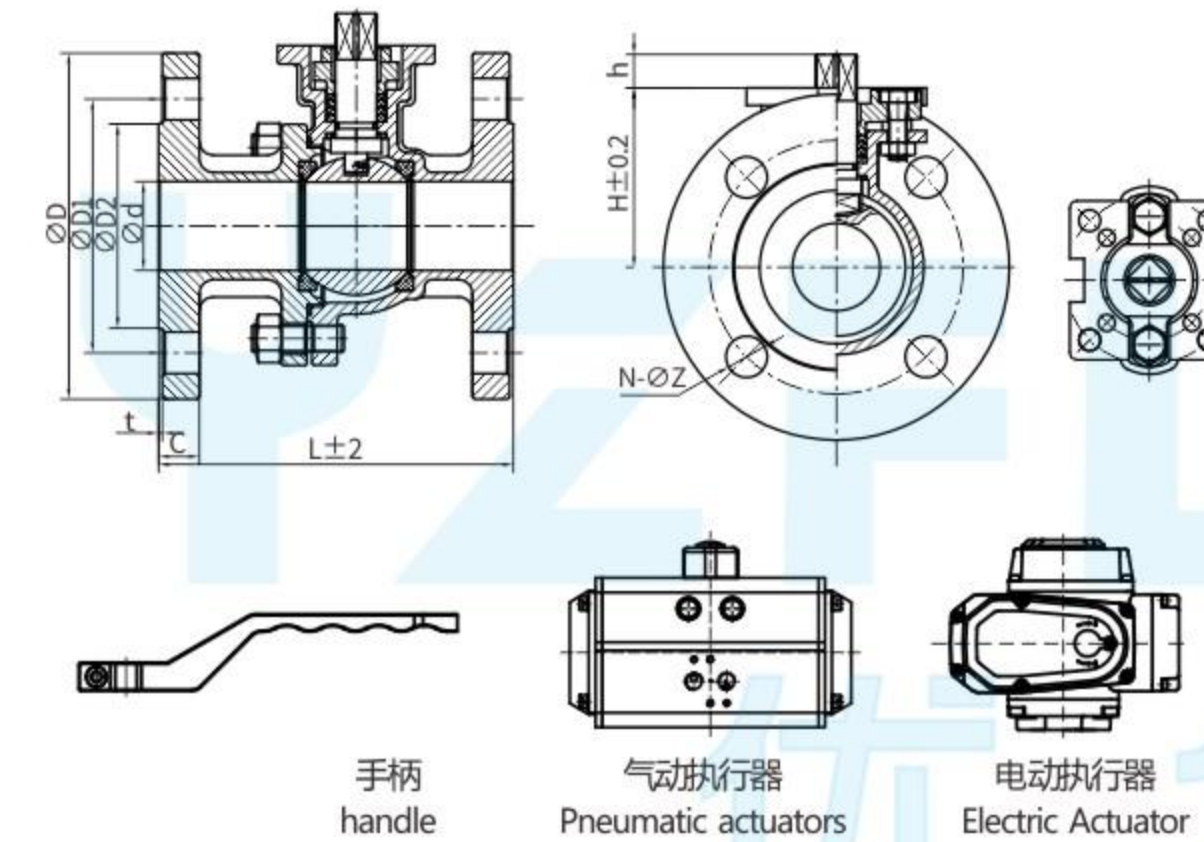
SIZE	d	D	D1	D2	C	t	L	H	W	A	B	R	r	K*K	h	N-φz
1/2"	15	90	60.5	35	11.6	2	108	51	140	50	36	3.5	3	9*9	9	4-φ16
3/4"	20	100	70	43	13.2	2	117	56	140	50	36	3.5	3	9*9	9	4-φ16
1"	25	110	79.5	51	14.7	2	127	62	170	70	50	4.5	3.5	11*11	11	4-φ16
1 1/4"	32	115	89	63.5	16.3	2	140	72	170	70	50	4.5	3.5	11*11	11	4-φ16
1 1/2"	40	125	98.5	73	17.9	2	165	78	200	70	50	4.5	3.5	14*14	14	4-φ16
2"	50	150	120.5	92	19.5	2	178	86	200	70	50	4.5	3.5	14*14	14	4-φ19
2 1/2"	65	180	140	105	23	2	190	102	300	102	70	5.5	4.5	17*17	17	4-φ19
3"	80	190	152.5	127	24.3	2	203	115	300	102	70	5.5	4.5	17*17	17	4-φ19
4"	100	230	190.5	157	24.3	2	229	137	300	102	70	5.5	4.5	17*17	17	8-φ19
5"	125	255	216	186	24.3	2	356	175	650	125	102	7	6	22	23	8-φ22
6"	150	280	241.5	216	26	2	394	208	800	125	102	7	6	27	28	8-φ22
8"	200	345	298.5	267	29	2	457	252	800	140	125	9	7	27	28	8-φ22

技术要求

1. 阀门的设计与制造按DIN 3357的规定。
2. 阀门的结构长度按DIN 3202的规定。
3. 阀门的连接法兰按DIN 1092的规定。
4. 阀门的检验与试验按EN 1226的规定。

Technical requirements

1. The valve is designed and manufactured according to DIN 3357.
2. The structural length of the valve is in accordance with DIN 3202.
3. The connecting flange of the valve is in accordance with DIN 1092.
4. The inspection and test of the valve shall be in accordance with the provisions of EN 1226.



尺寸 Dimensions

Unit:mm

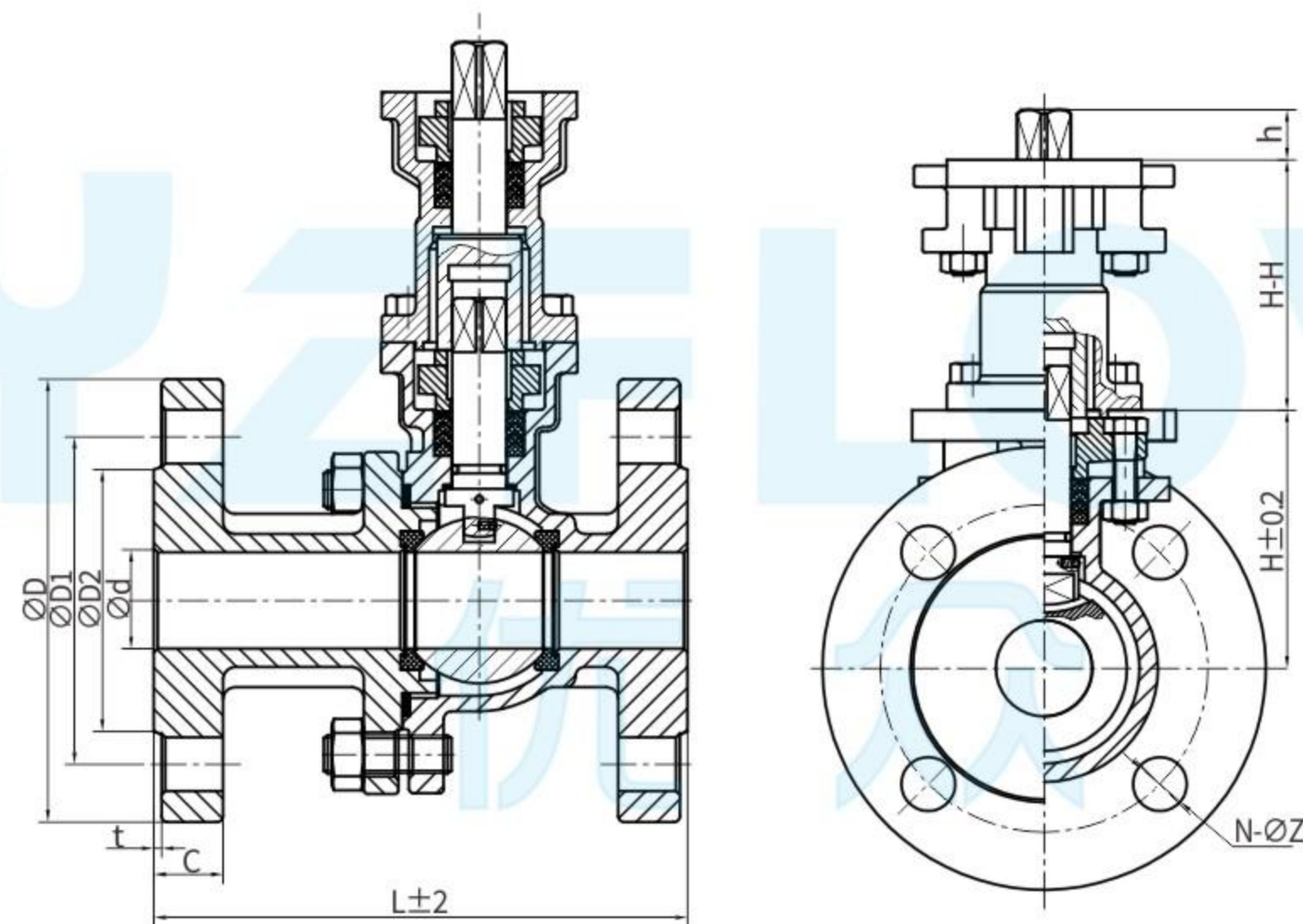
SIZE	d	D	D1	D2	C	t	L	H	W	A	B	R	r	K*K	h	N-φz
1/2"	15	95	65	45	16	2	115	55	140	50	36	3.5	3	9*9	9	4-φ14
3/4"	20	105	75	58	18	2	120	60	140	50	36	3.5	3	9*9	9	4-φ14
1"	25	115	85	68	18	2	125	67	170	70	50	4.5	3.5	11*11	11	4-φ14
1 1/4"	32	140	100	78	18	2	130	76	170	70	50	4.5	3.5	11*11	11	4-φ18
1 1/2"	40	150	110	88	18	3	140	85	200	70	50	4.5	3.5	14*14	14	4-φ18
2"	50	165	125	102	18	3	150	93	200	70	50	4.5	3.5	14*14	14	4-φ18
2 1/2"	65	185	145	122	18	3	170	113	300	102	70	5.5	4.5	17*17	17	8-φ18
3"	80	200	160	138	20	3	180	126	300	102	70	5.5	4.5	17*17	17	8-φ18
4"	100	220	180	158	20	3	190	141	300	102	70	5.5	4.5	17*17	17	8-φ18
5"	125	250	210	188	22	3	325	180	400	125	102	7	6	22	23	8-φ18
6"	150	285	240	212	22	3	350	207	500	125	102	7	6	27	27	8-φ22
8"	200	340	295	268	24	3	400	256	600	140	125	9	7	36	36	12-φ22

德标法兰球阀 高平台球阀 German standard flanged ball valve High Platform Ball Valve Q41F-16P

性能规范 Performance Specifications		公称压力 Nominal pressure		PN16	
公称通径 Nominal diameter		DN15-200			
试验压力 Test pressure	强度试验 Strength test	2.4	Mpa	试验介质 Test medium	水 Water
	密封试验 Seal test	1.8			
	气密封试验 Air tightness test	0.6			
适用介质 Applicable media		水、油品等 water oil etc		试验温度 Test temperature	
最高工作温度 Maximum operating temperature		-29~120°C		常温 Normal Temperature	

加长阀杆法兰球阀
高平台球阀

American Standard Flange
Q41F-16P High Platform Ball Valve
Q41F-16P



尺寸 Dimensions

Unit:mm

SIZE	d	D	D1	D2	C	t	L	H	W	A	B	R	r	K*K	H-H	h	N-φz
1/2"	15	95	65	45	16	2	130	50	140	50	36	3.5	3	9*9	60	9	4-φ14
3/4"	20	105	75	58	18	2	130	54	140	50	36	3.5	3	9*9	60	9	4-φ14
1"	25	115	85	68	18	2	140	61	170	70	50	4.5	3.5	11*11	65	11	4-φ14
1 1/4"	32	140	100	78	18	2	165	74	170	70	50	4.5	3.5	11*11	65	11	4-φ18
1 1/2"	40	150	110	88	18	3	165	78	200	70	50	4.5	3.5	14*14	80	14	4-φ18
2"	50	165	125	102	18	3	203	82	200	70	50	4.5	3.5	14*14	80	14	4-φ18
2 1/2"	65	185	145	122	18	3	222	112	300	102	70	5.5	4.5	17*17	100	17	8-φ18
3"	80	200	160	138	20	3	241	120	300	102	70	5.5	4.5	17*17	100	17	8-φ18
4"	100	220	180	158	20	3	305	144	300	102	70	5.5	4.5	17*17	100	17	8-φ18

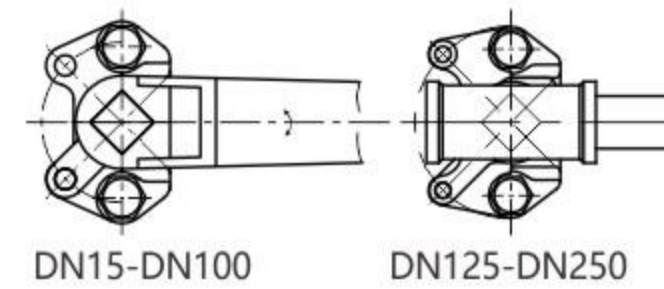
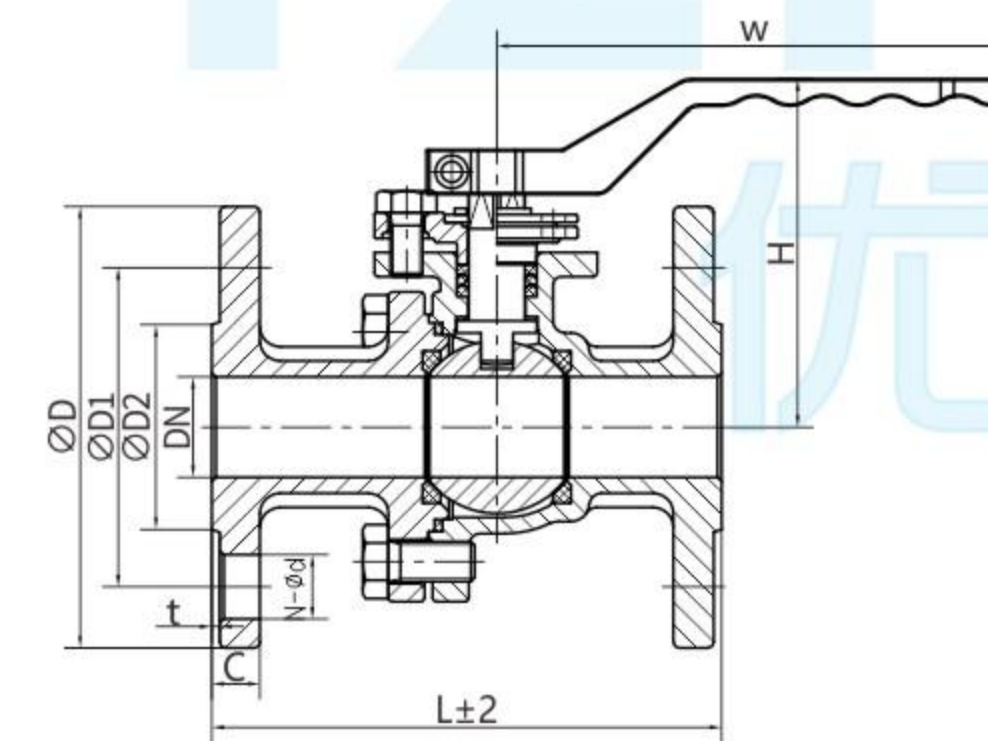
标准/STANDARDS:

- 1.设计标准/Design: GB/T12237;DIN3357;EN12516-1;ASME B16.34;API608.
- 2.壁厚标准/Wall Thickness: ANSI B16.34;EN12516-1.
- 3.法兰标准/End Flange: GB/T9113;HG20592;DIN1092;ASME B16.5;JIS B2238.
- 4.检测标准/Inspection&Testing:GB/T 26480 26480;DIN3230;API 598;EN 12266.

低平台法兰球阀

Low Platform Flanged Ball Valve

Q41F-16P
Q41F-150LB
Q41F-10K



DN15-DN100

DN125-DN250

明细表
MATERIALS LIST

名称 PART NAME	材质表 MATERIAL		
1 阀盖 Bonnet	A351 CF8	A351 CF8M	A216 WCB
2 螺栓 Bolt	ASTM A193 B7 ASTM A193 B8		
3 螺母 screw nut	A194 8 A194 2H		
4 密封线 Gasmket	PTFE/RPEFE		
5 球体 Ball	SUS304/SUS316		
6 密封 Seal	PTFE/RPEFE/PPL/PEEK		
7 阀体 Body	A351 CF8	A351 CF8M	A216 WCB
8 防静电弹簧 Anti Static Decice	SUS304		
9 阀杆 Stem	SUS304/SUS316		
10 减磨垫 Stem Washer	PTFE/RPEFE		
11 O型圈 O-Ring	FKM/VITON		
12 V型填料 V-Ring Packing	PTFE/RPEFE		
13 压盖 Gland	SUS304		
14 定位片 Stop lock cap	SUS304		
15 轴用挡圈 Shaft lock ring	SUS304		
16 螺栓 Bolt	SUS304		
17 手柄 Handle	A351 CF8		

尺寸 Dimensions GB PN16/40 (国标法兰球阀/National standard flange ball valve) Unit:mm

SIZE	L	D	D1	D2	t	C	N-φd	H	W
15	130	95	65	45	2	16	4-φ14	70.5	140
20	130	105	75	55	2	18	4-φ14	74	140
25	140	115	85	65	2	18	4-φ14	88	160
32	165	140	100	78	2	18	4-φ18	92.5	160
40	165	150	110	85	3	18	4-φ18	116	230
50	203	165	125	100	3	20	4-φ18	122.5	230
65	222	185	145	120	3	18	4-φ18	131.5	230
80	241	200	160	135	3	20	8-φ18	158.5	300
100	305	220	180	155	3	20	8-φ18	182.5	300
125	320	245	210	185	3	22	8-φ18	238	500
150	360	285	240	210	3	24	8-φ23	278.5	645
200	457	335	295	265	3	26	12-φ23	329	845
250	533	405	355	320	3	30	12-φ25	395	1335

尺寸 Dimensions JIS 10K (日标法兰球阀/Japanese standard flanged ball valve) Unit:mm

SIZE	DN	L	D	D1	D2	t	C	N-φd	H	W
1/2"	15	108	95	70	52	1	12	4-φ15	70.5	130
3/4"	20	117	100	75	58	1	14	4-φ15	74	130
1"	25	127	125	90	70	1	14	4-φ19	88	170
1¼"	32	140	135	100	80	2	16	4-φ19	92.5	170
1½"	38	165	140	105	85	2	16	4-φ19	116	230
2"	50	178	155	120	100	2	16	4-φ19	122.5	230
2½"	65	190	175	140	116	2	18	4-φ19	131.5	230
3"	76	203	185	150	130	2	18	8-φ19	158.5	300
4"	100	229	210	175	155	2	18	8-φ19	182.5	300
5"	125	356	250	210	185	2	20	8-φ23	238	500
6"	150	394	280	240	215	2	22	8-φ23	278.5	645
8"	200	457	330	290	265	2	22	12-φ23	329	845
10"	250	533	400	355	325	2	24	12-φ25	395	1335

尺寸 Dimensions ASME CLASS 150LB (美标法兰球阀/American Standard Flanged Ball Valve) Unit:mm

SIZE	DN	L	D	D1	D2	t	C	N-φd	H	W
1/2"	15	108	90	60.5	35	2	10	4-φ16	70.5	140
3/4"	20	117	100	70	43	2	11	4-φ16	74	140
1"	25	127	110	79.5	51	2	12	4-φ16	88	160
1¼"	32	140	115	89	63.5	2	13	4-φ16	92.5	160
1½"	38	165	125	98.5	73	2	15	4-φ16	116	230
2"	50	178	150	120.5	92	2	16	4-φ19	122.5	230
2½"	65	190	180	140	105	2	18	4-φ19	131.5	230
3"	76	203	190	152.5	127	2	19	4-φ19	158.5	300
4"	100	229	230	190.5	157	2	24	8-φ19	182.5	300
5"	125	356	255	216	186	2	24	8-φ22	238	500
6"	150	394	280	241.5	216	2	26	8-φ22	278.5	645
8"	200	457	345	298.5	267	2	29	8-φ22	329	845
10"	250	533	405	362	324	2	31	12-φ25	395	1335

尺寸 Dimensions DIN PN16/40 (德标法兰球阀/German standard flanged ball valve) Unit:mm

SIZE	L	D	D1	D2	t	C	N-φd	H	W
15	115	95	65	45	2	16	4-φ14	70.5	140
20	120	105	75	58	2	18	4-φ14	74	140
25	125	115	85	68	2	18	4-φ14	88	160
32	130	140	100	78	2	18	4-φ14	92.5	160
40	140	150	110	88	3	18	4-φ18	116	230
50	150	165	125	102	3	20	4-φ18	122.5	230
65	170	185	145	122	3	20	4-φ18	131.5	230
80	180	200	160	138	3	20	8-φ18	158.5	300
100	190	220	180	158	3	20	8-φ18	182.5	300
125	325	250	210	188	3	22	8-φ18	238	500
150	350	285	240	212	3	24	8-φ22	278.5	645
200	400	340	295	268	3	26	12-φ22	329	845
250	450	405	355	320	3	30	12-φ26	395	1335

国标手动球阀
National Standard
Manual Ball Valve

Q41F-16P

技术要求

1. 阀门的设计与制造按GB/T 12237的规定。
2. 阀门的结构长度按JB/1686的规定。
3. 阀门的连接法兰按HG/T 20592的规定。
4. 阀门的检验与试验按GB/T 26480的规定。

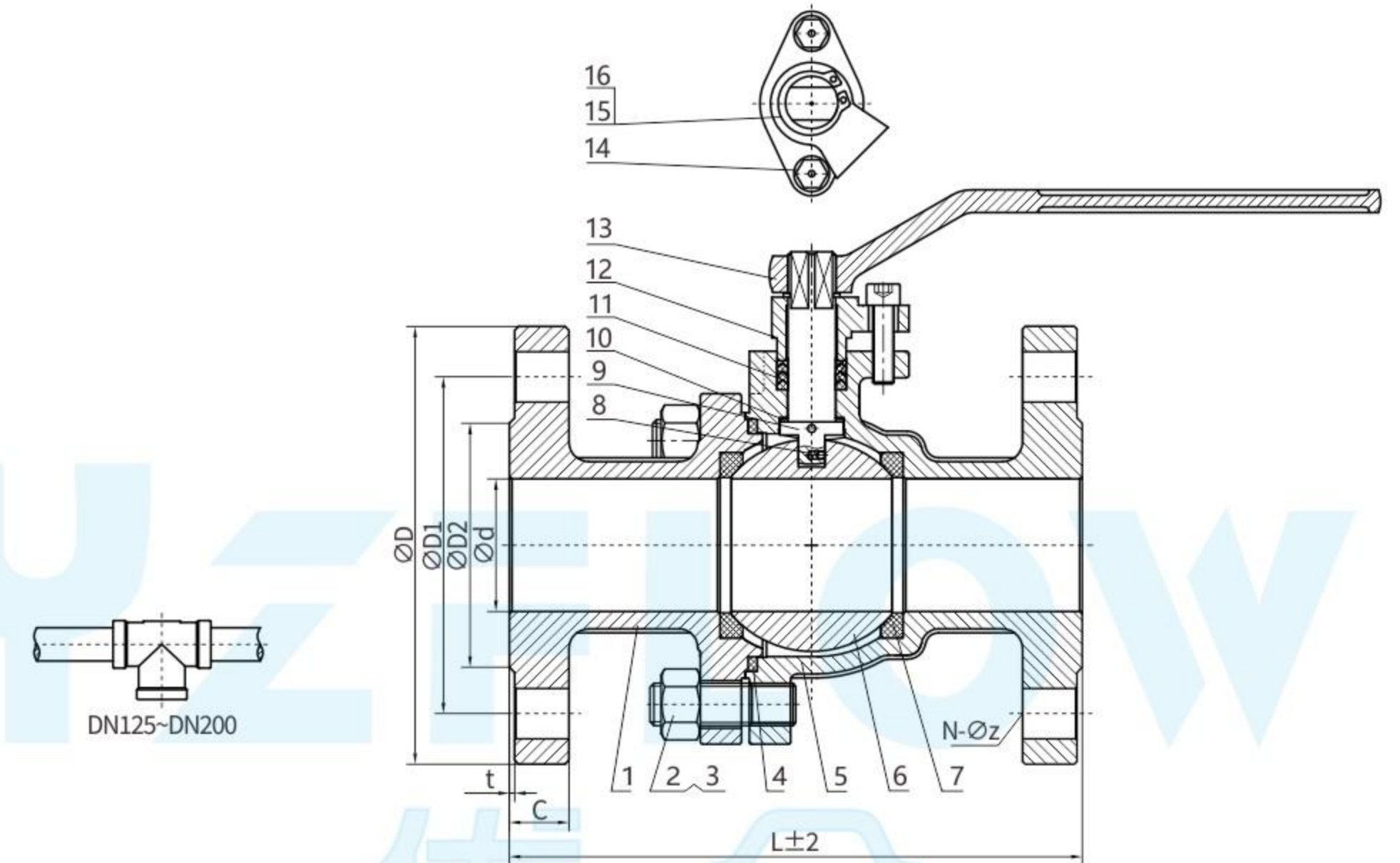
Technical requirements

1. The design and manufacture of the valve are in accordance with the provisions of GB/T 12237.
2. The structural length of the valve is in accordance with the provisions of JB/1686.
3. The connecting flange of the valve is in accordance with the regulations of HG/T 20592.
4. The inspection and test of the valve shall be in accordance with the provisions of GB/T 26480.

性能规范
Performance Specifications

公称压力 Nominal pressure		PN16					
公称通径 Nominal diameter		DN15-200					
试验压力 Test pressure	强度试验 Strength test	2.4	Mpa	试验介质 Test medium	水 Water	试验温度 Test temperature	常温 Normal Temperature
	密封试验 Seal test	1.8			空气 Air		
	气密封试验 Air tightness test	0.6					
适用介质 Applicable media		水、油品等 water oil etc					
最高工作温度 Maximum operating temperature		-29~120°C					

序号 Number	零件名称 Part name	材质 Material		
1	端盖 End cap	A351 CF8M	A351 CF8M	A216 WCB
2	螺栓 Bolt	SS304	SS304	SS304
3	螺母 Nut	SS304	SS304	SS304
4	密封线 Sealing line	PTFE	PTFE	PTFE
5	阀体 Valve body	A351 CF8M	A351 CF8	A216 WCB
6	球体 Sphere	SS316	SS304	SS304
7	阀座 Valve seat	PTFE	PTFE	PTFE
8	防静电装置 Anti-static device	SS304	SS316	SS304
9	阀杆 Stem	SS316	SS304	SS304
10	减磨垫 Anti-wear pads	PTFE	PTFE	PTFE
11	V型填料 V-shaped packing	PTFE	PTFE	PTFE
12	压板 Platen	CF8	CF8	CF8
13	手柄 Handle	CF8	CF8	45#
14	定位螺栓 Set bolt	SS304	SS304	SS304
15	定位锁块 Positioning lock block	SS304	SS304	SS304
16	卡簧 Circlip	SS304	SS304	SS304



尺寸 Dimensions 化工部法兰/机械部长度 HG Flange/JB Length Unit:mm

DN	L	D	D1	D2	C	t	N-φz
15	130	95	65	45	16	2	4-φ14
20	140	105	75	55	18	2	4-φ14
25	150	115	85	65	18	2	4-φ14
32	165	140	100	78	18	2	4-φ18
40	180	150	110	85	18	3	4-φ18
50	200	165	125	100	18	3	4-φ18
65	220	185	145	120	18	3	8-φ18
80	250	200	160	135	20	3	8-φ18
100	280	220	180	155	20	3	8-φ18
125	320	250	210	188	22	3	8-φ18
150	360	285	240	212	22	3	8-φ22
200	400	340	295	268	24	3	12-φ22

国标手动球阀
National Standard
Manual Ball Valve

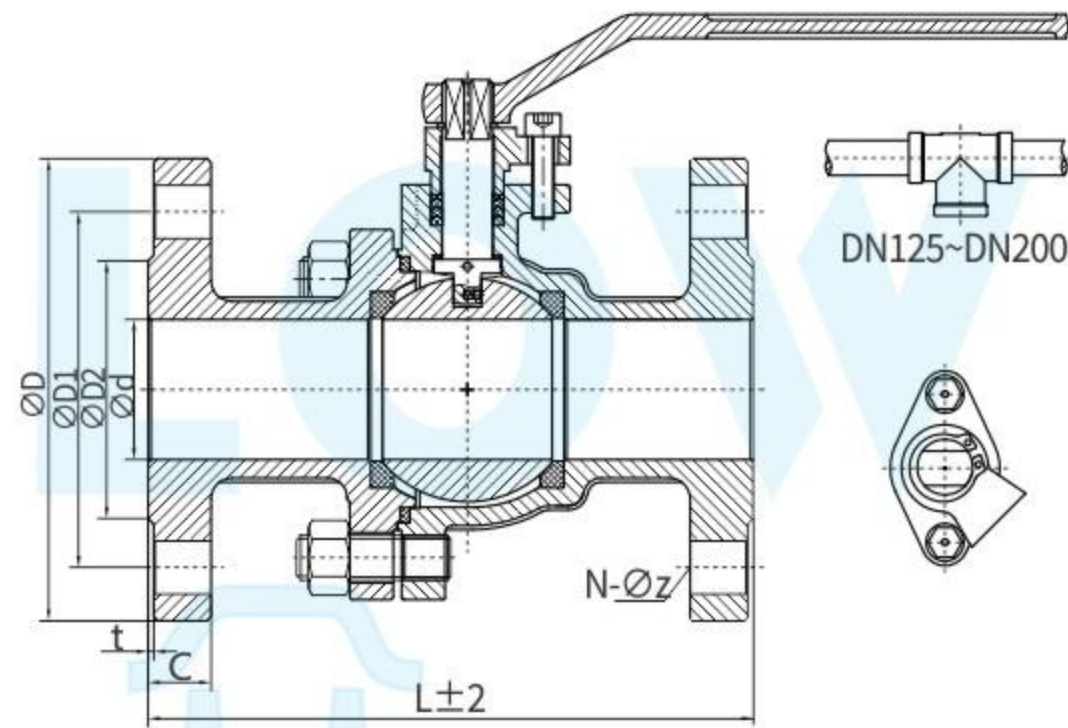
Q41F-16P

技术要求

1. 阀门的设计与制造按GB/T 12237的规定。
2. 阀门的结构长度按GB/T 12221的规定。
3. 阀门的连接法兰按HG/T 20592的规定。
4. 阀门的检验与试验按GB/T 26480的规定。

Technical requirements

1. The design and manufacture of the valve are in accordance with the provisions of GB/T 12237.
2. The structural length of the valve is in accordance with the provisions of GB/T 12221.
3. The connecting flange of the valve is in accordance with the regulations of HG/T 20592.
4. The inspection and test of the valve shall be in accordance with the provisions of GB/T 26480.



性能规范 Performance Specifications					
公称压力 Nominal pressure		PN16			
公称口径 Nominal diameter		DN15-200			
试验压力 Test pressure	强度试验 Strength test	2.4	Mpa	试验介质 Test medium	试验温度 Test temperature
	密封试验 Seal test	1.8			
	气密封试验 Air tightness test	0.6			
适用介质 Applicable media		水、油品等 water oil etc			
最高工作温度 Maximum operating temperature		-29~120°C			

尺寸 Dimensions 化工部法兰/化工部长度 HG Flange/HG Length Unit:mm

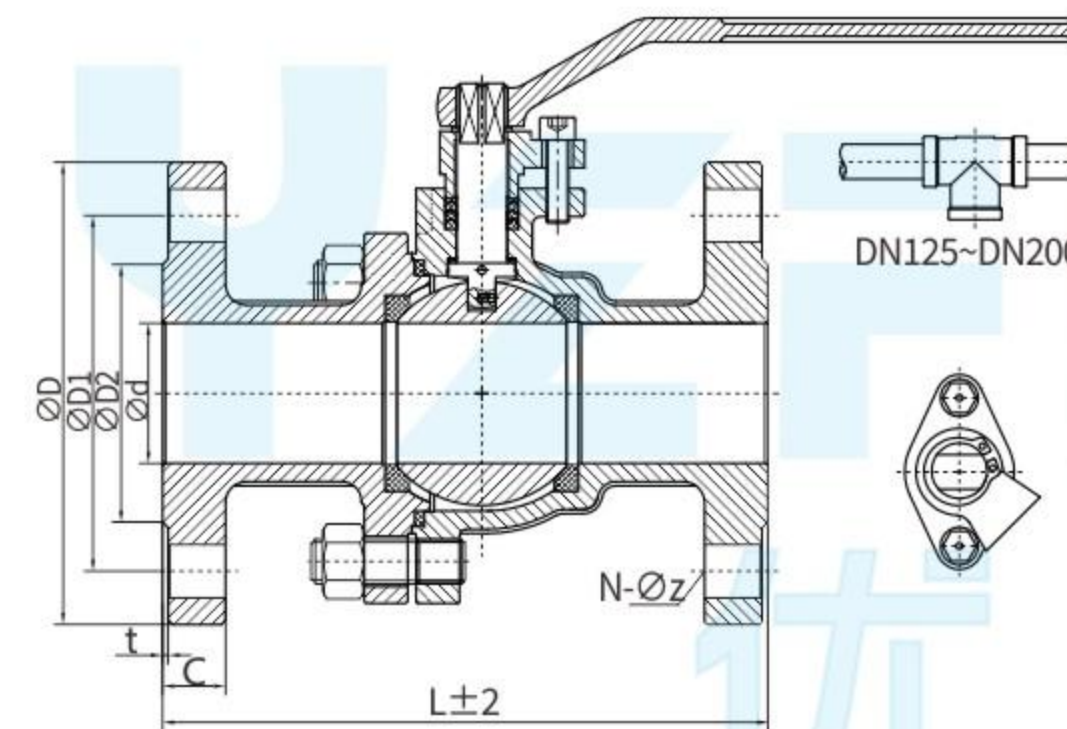
DN	L	D	D1	D2	C	t	N-φz
15	130	95	65	45	16	2	4-φ14
20	140	105	75	55	18	2	4-φ14
25	150	115	85	65	18	2	4-φ14
32	165	140	100	78	18	2	4-φ18
40	165	150	110	85	18	3	4-φ18
50	203	165	125	100	18	3	4-φ18
65	222	185	145	120	18	3	8-φ18
80	241	200	160	135	20	3	8-φ18
100	305	220	180	155	20	3	8-φ18
125	356	250	210	188	22	3	8-φ18
150	394	285	240	212	22	3	8-φ22
200	457	340	295	268	24	3	12-φ22

技术要求

1. 阀门的设计与制造按GB/T 12237的规定。
2. 阀门的结构长度按GB/T 12221的规定。
3. 阀门的连接法兰按JB/T 79.1的规定。
4. 阀门的检验与试验按GB/T 26480的规定。

Technical requirements

1. The design and manufacture of the valve are in accordance with the provisions of GB/T 12237.
2. The structural length of the valve is in accordance with the provisions of GB/T 12221.
3. The connecting flange of the valve shall be in accordance with the provisions of JB/T 79.1.
4. The inspection and test of the valve shall be in accordance with the provisions of GB/T 26480.



尺寸 Dimensions 机械部法兰/机械部长度 JB Flange/JB Length Unit:mm

DN	L	D	D1	D2	C	t	N-φz
15	130	95	65	45	14	2	4-φ14
20	140	105	75	55	14	2	4-φ14
25	150	115	85	65	14	2	4-φ14
32	165	135	100	78	16	2	4-φ18
40	180	145	110	85	16	3	4-φ18
50	200	160	125	100	16	3	4-φ18
65	220	180	145	120	18	3	4-φ18
80	250	195	160	135	20	3	8-φ18
100	280	215	180	155	20	3	8-φ18
125	320	245	210	188	22	3	8-φ18
150	360	280	240	212	22	3	8-φ23
200	400	335	295	268	24	3	12-φ23

国标手动球阀
National Standard
Manual Ball Valve

Q41F-16P

性能规范 Performance Specifications					
公称压力 Nominal pressure		PN16			
公称口径 Nominal diameter		DN15-200			
试验压力 Test pressure	强度试验 Strength test	2.4	Mpa	试验介质 Test medium	试验温度 Test temperature
	密封试验 Seal test	1.8			
	气密封试验 Air tightness test	0.6			
适用介质 Applicable media		水、油品等 water oil etc			
最高工作温度 Maximum operating temperature		-29~120°C			

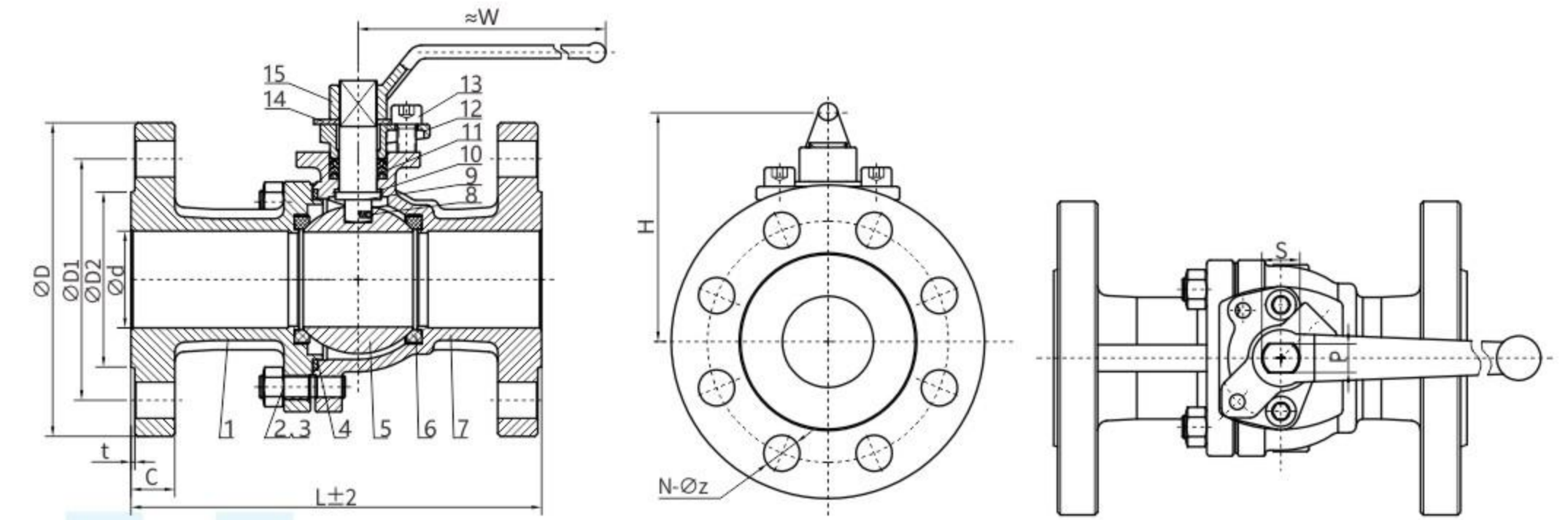
美标手动球阀

American Standard
Manual Ball Valve

Q41F-300LB

性能规范 Performance Specifications							
公称压力 Nominal pressure			300LB				
公称通径 Nominal diameter			1/2"-4"				
试验压力 Test pressure	强度试验 Strength test	7.5	Mpa	试验介质 Test medium	水 Water	试验温度 Test temperature	常温 Normal Temperature
	密封试验 Seal test	5.5					
	气密封试验 Air tightness test	0.6					
适用介质 Applicable media				水、油品等 water oil etc			
最高工作温度 Maximum operating temperature				-29~150°C			

序号 Number	名称 Part name	材质表 Material	
1	端盖 End cap	A351 CF8	A351 CF8M
2	螺栓 Bolt	A193-B8	A193-B8
3	螺母 Nut	A194-8	A194-8
4	线条 Line	PTFE/石墨(Graphite)+SS304	PTFE/石墨(Graphite)+SS304
5	球体 Sphere	SS304	SS316
6	阀体 Valve body	A351 CF8	A351 CF8M
7	阀座 Valve seat	R-PTFE/PEEK	R-PTFE/PEEK
8	防静电装置 Anti-static device	SS304	SS304
9	阀杆 Stem	SS304	SS316
10	减磨垫 Anti-wear pads	PTFE	PTFE
11	填料 Filler	PTFE/石墨(Graphite)	PTFE/石墨(Graphite)
12	压板 Platen	CF8	CF8
13	定位螺栓 Set bolt	SS304	SS304
14	定位锁块 Positioning lock block	SS304	SS304
15	手柄 Handle	CF8	CF8



尺寸 Dimensions

Unit:mm

SIZE	d	D	D1	D2	C	t	L	H	W	N-φz	P	S
1/2"	15	95	66.7	35	15	2	140	75	155	4-φ16	8	12
3/4"	20	115	82.6	43	16.3	2	152	75	155	4-φ19	8	12
1"	25	125	88.9	51	18	2	165	85	165	4-φ19	9	14
1¼"	32	135	98.4	64	20	2	178	90	180	4-φ19	10	16
1½"	40	155	114.3	73	21	2	190	100	185	4-φ22	12	18
2"	50	165	127.0	92	23	2	216	115	235	8-φ19	14	20
2½"	65	190	149.2	105	26	2	241	135	255	8-φ22	15	22
3"	80	210	168.3	127	29	2	282	145	270	8-φ22	16	24
4"	100	255	200.0	157	32.5	2	305	175	340	8-φ22	17	26

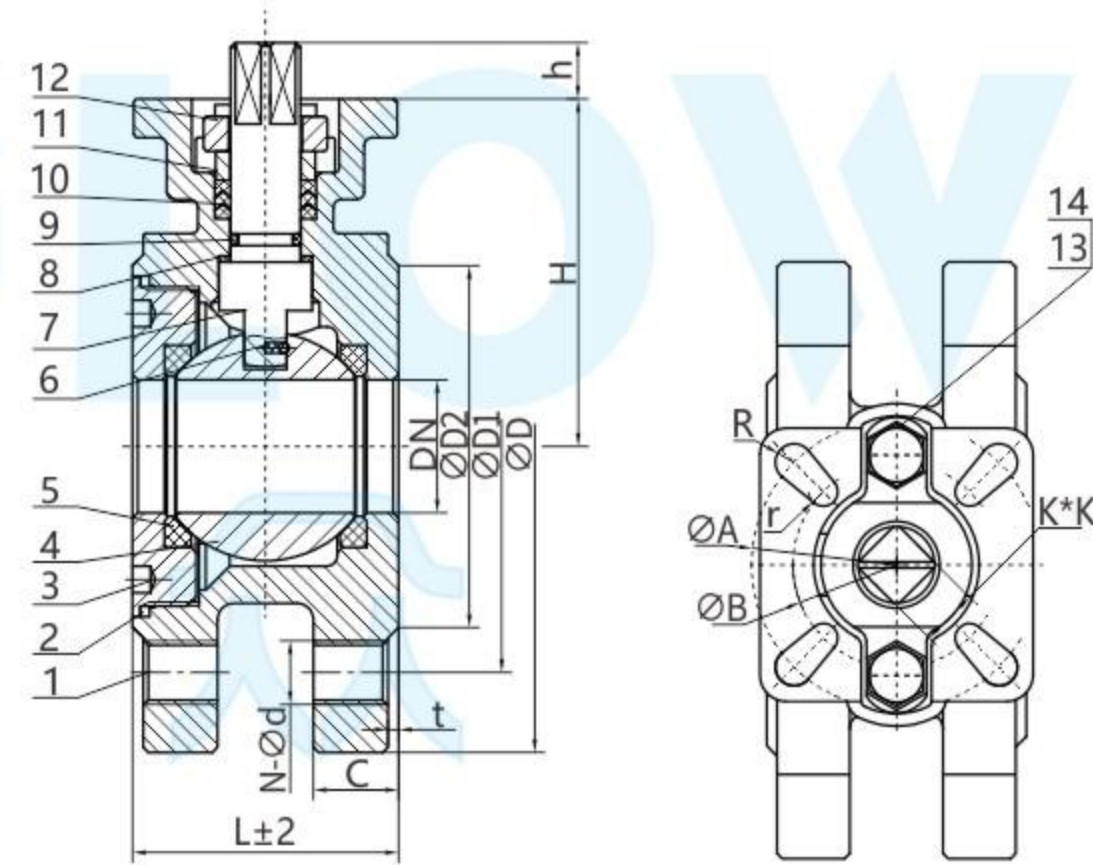
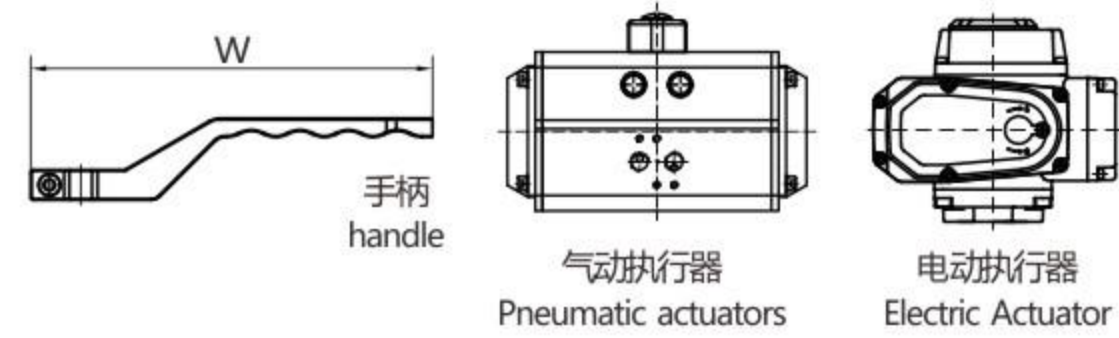


对夹式球阀

Wafer type ball valve

Q71F-16P

序号 Number	名称 Name	材质 Material		
1	阀体 Body	A351 CF8	A351 CF8M	A216 WC8
2	密封线 Gasmket	PTFE	PTFE	PTFE
3	阀盖 Bonnet	A351 CF8	A351 CF8M	A216 WCB
4	球体 Ball	SS304/SS316	SS316	SS304/SS316
5	阀座 seat	PTFE	PTFE	PTFE
6	防静电装置 Anti static device	SS304	SS316	SS304
7	阀杆 Stem	SS304/SS316	SS316	SS304/SS316
8	减摩垫 Stem Washer	PTFE	PTFE	PTFE
9	O型圈 O-Ring	NBR/VITON	NBR/VITON	NBR/VITON
10	填料 Packing	PTFE	PTFE	PTFE
11	压圈 Pressure ring	SS304	SS304	SS304
12	压板 platen	CF8	CF8	CF8
13	弹垫 spring pad	SS304	SS304	SS304
14	螺母 nut	SS304	SS304	SS304



尺寸 Dimensions

Unit:mm

SIZE	DN	L	D	D1	D2	t	C	N-φd	H	h	W	A	B	R	r	K
DN15	15	35	95	65	45	2	16	4-M12	75	8	140	42	36	3	3	9
DN20	20	38	105	75	58	2	16	4-M12	80	8	140	42	36	3	3	9
DN25	25	42	115	85	68	2	16	4-M12	90	11	170	50	42	3.5	3	11
DN32	32	53	135	100	78	2	18	4-M16	103	11	170	50	42	3.5	3	11
DN40	38	63	145	110	88	3	18	4-M16	115	15	200	70	50	4.5	3.5	14
DN50	50	72	160	125	102	3	18	4-M16	120	15	200	70	50	4.5	3.5	14
DN65	65	95	180	145	122	3	18	4-M16	140	18	300	102	70	5.5	4.5	17
DN80	76	118	195	160	138	3	20	8-M16	150	18	300	102	70	5.5	4.5	17
DN100	100	142	215	180	158	3	20	8-M16	170	18	300	102	70	5.5	4.5	17

DISCHARGE VALVE

放料阀



放料阀

Discharge valve

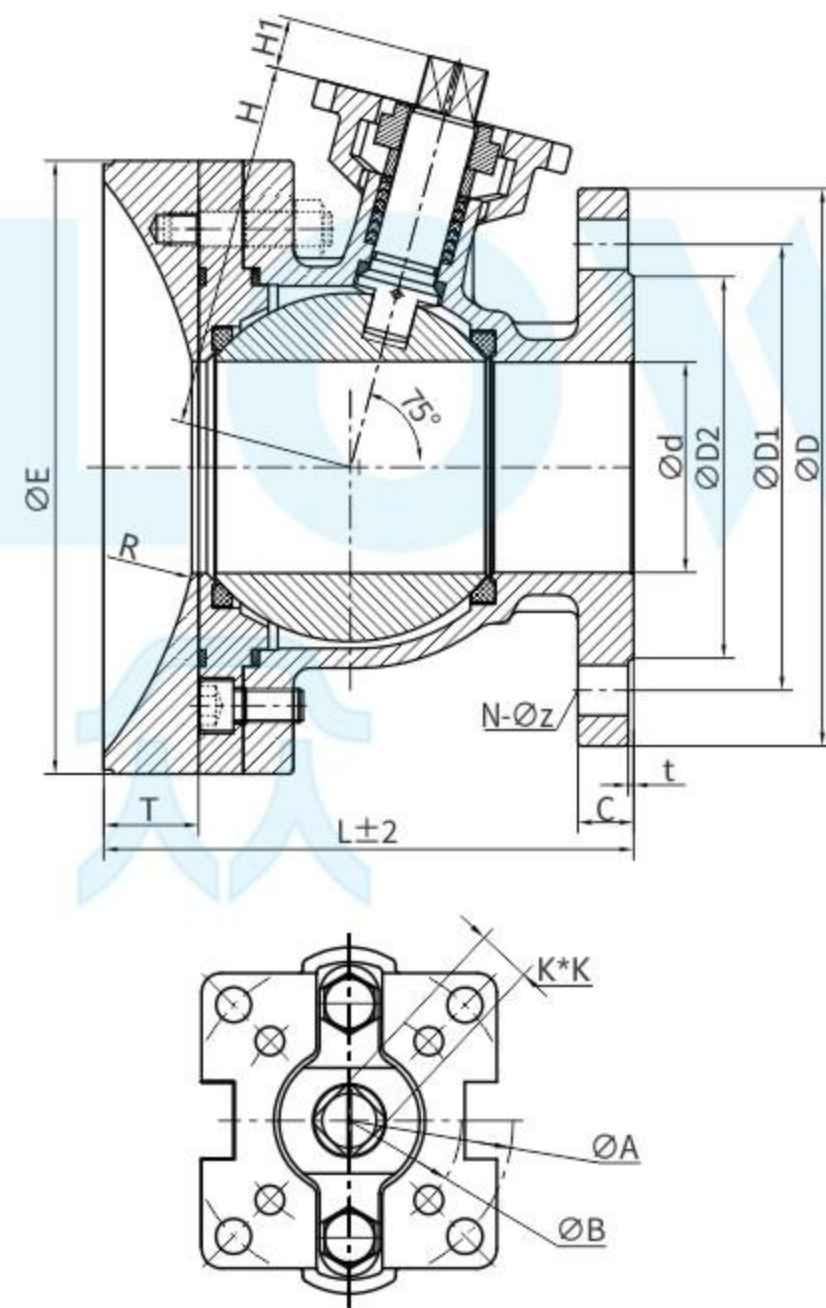
Q21F-16P/40P

技术要求

1. 阀门的设计与制造按GB/T 12237的规定。
2. 阀门的结构长度按GB/T 12221的规定。
3. 阀门的连接法兰按HG/T 20592的规定。
4. 阀门的检验与试验按GB/T 26480的规定。

Technical requirements

1. The design and manufacture of the valve are in accordance with the provisions of GB/T 12237.
2. The structural length of the valve is in accordance with the provisions of GB/T 12221.
3. The connecting flange of the valve is in accordance with the regulations of HG/T 20592.
4. The inspection and test of the valve shall be in accordance with the provisions of GB/T 26480.



序号 Number	零件名称 Name	材质 Material	
1	阀体 valve body	A351 CF8M	A351 CF8
2	内六角螺栓 Hexagon socket head bolt	A193 2H	A193 2H
3	圆弧 (焊接) 阀盖 Arc (Welded) Bonnet	F316	F304
4	密封线 sealing line	PTFE/PPL	PTFE/PPL
5	阀盖 cap	F316	F304
6	密封圈 sealing ring	PTFE/PPL	PTFE/PPL
7	球体 sphere	F316	F304
8	阀杆 stem	F316	F304
9	止推垫 thrust pad	PTFE/PPL	PTFE/PPL
10	O型圈 O-ring	VITON	VITON
11	填料 filler	PTFE/PPL	PTFE/PPL
12	压盖 gland	A351 CF8	A351 CF8
13	六角头螺栓 Hexagon head bolts	A193 2H	A193 2H
14	螺母 nut	A194-8	A194-8

尺寸 Dimensions

Unit:mm

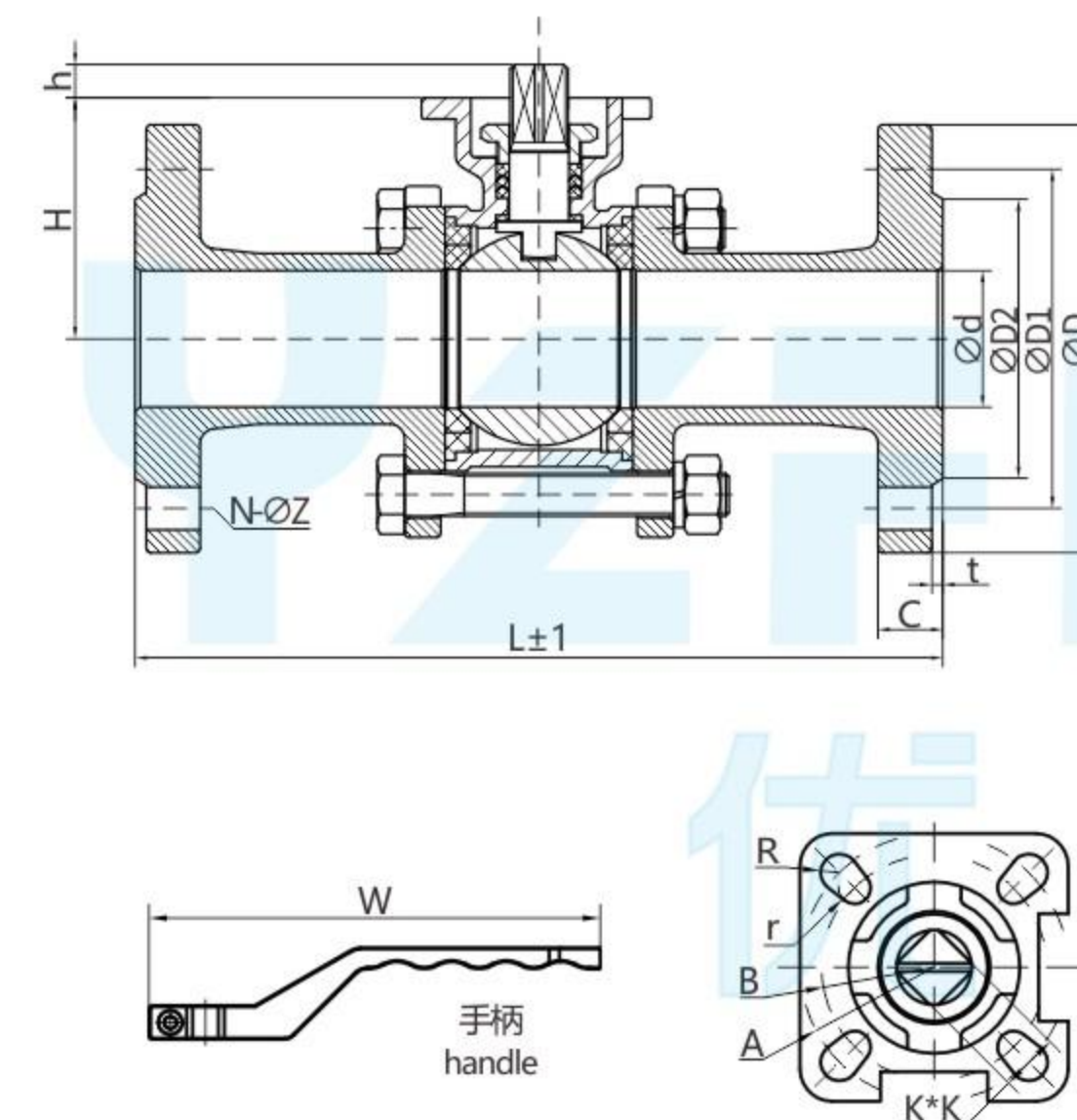
DN	L	D	D1	D2	C	t	N-φz	T	E	R	A	B	H	H1	K*K
50	140	165	125	100	20	2	4-φ18	19.5	160	150	70	50	112	15	14
65	160	185	145	120	20	2	4-φ18	23.5	178	150	102	70	130	18	17
80	175	200	160	135	20	2	8-φ18	26.5	195	160	102	70	140	18	17
100	215	220	180	155	22	2	8-φ18	29.5	230	185	125	102	155	23	22
125	245	250	210	188	22	3	8-φ18	32	276	300	125	102	186	23	22
150	325	285	240	212	24	3	8-φ22	35	327	350	125	102	208	28	27

技术要求

1. 阀门的设计与制造按ANSI/ASME B16.34的规定。
2. 阀门的连接法兰按JB/T79. ASME B16.5的规定。
3. 阀门的检验与试验按API 598的规定。

Technical requirements

1. The design and manufacture of the valve are in accordance with the regulations of ANSI/ASME B16.34.
2. The connecting flange of the valve shall comply with the regulations of JB/T79. ASME B16.5.
3. The inspection and test of the valve shall be in accordance with the provisions of API 598.



尺寸 Dimensions

Unit:mm

DN	d	L	D	D1	D2	C	t	N-φz	H	W	A	B	R	r	K*K	h
15	15	125	95	65	45	12	2	4-φ14	37	140	50	42	3.5	3	9*9	10
20	20	150	105	75	55	12	2	4-φ14	45	140	50	42	3.5	3	9*9	10
25	25	155	115	85	65	12	2	4-φ14	55	170	50	42	3.5	3	11*11	12
32	32	175	135	100	78	15	2	4-φ18	60	170	50	42	3.5	3	11*11	12
40	38	195	145	110	85	15	2	4-φ18	70	200	70	50	4.5	3.5	14*14	15
50	50	225	160	125	100	16	2	4-φ18	77	200	70	50	4.5	3.5	14*14	15
65	65	290	180	145	120	18	3	4-φ18	98	300	102	70	5.5	4.5	17*17	18
80	76	300	195	160	135	18	3	8-φ18	112	300	102	70	5.5	4.5	17*17	18
100	100	345	215	180	155	20	3	8-φ18	140	300	102	70	5.5	4.5	19*19	18

三片式高平台法兰球阀

3PC-High Platform Flanged Ball Valve

3PC-Q41F-1000

性能规范

Performance Specifications

公称压力 Nominal pressure		1000 PSI	
试验压力 Test pressure	强度试验 Strength test	10.4	Mpa
	高压密封试验 High pressure sealing test	7.6	
	低压密封试验 Low pressure sealing test	0.6	
适用介质: 水 油 气品等 Applicable medium: water, oil, gas, etc.			
适用温度 Applicable temperature	-29~+120		°C

高平台 T型三通球阀

Mechanical Department High Platform
T-type three-way ball valve

Q45F-16P

性能规范 Performance Specifications					
公称压力 Nominal pressure			PN16		
公称口径 Nominal diameter			DN15-200		
试验压力 Test pressure	强度试验 Strength test	2.4	Mpa	试验介质 Test medium	常温 Normal Temperature
	密封试验 Seal test	1.8			
	气密封试验 Air tightness test	0.6			
适用介质 Applicable media			水、油品等 water oil etc		
最高工作温度 Maximum operating temperature			-29~120°C		

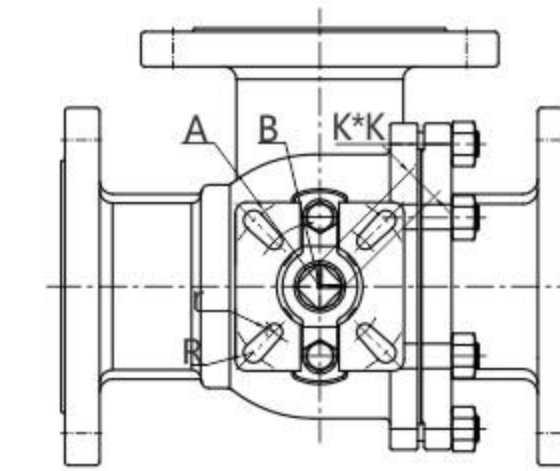
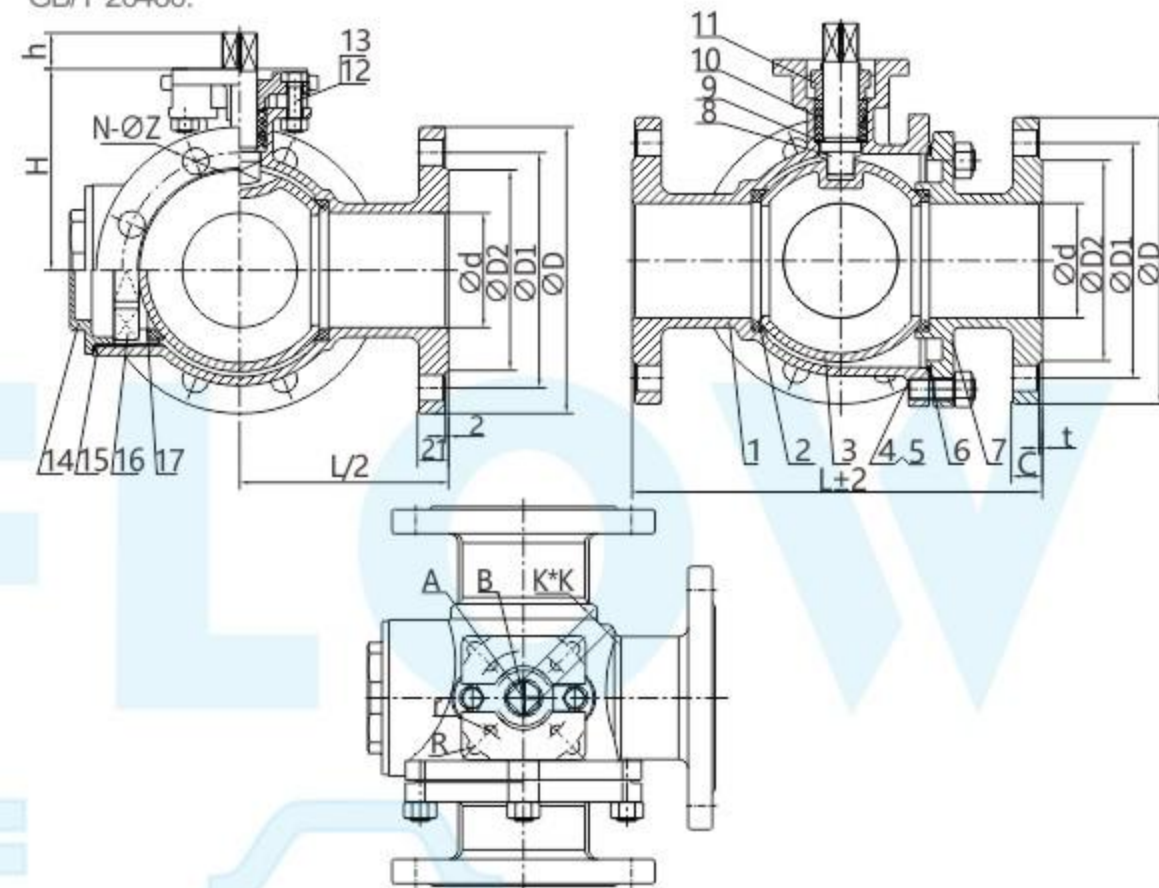
序号 Number	代号 Code	名称 Name	数量 Quantity	材料 Material	重量 Weight	备注 Remark
1	Q45F-16P-05	阀体 valve body	1	A351 CF8 /CF8M	单件 总计	
2	Q45F-16P-15	密封圈 sealing ring	3	PTFE/RPTFE		定制件 Customized parts
3	Q45F-16P-10	球体 sphere	1	SS304/SS316		
4	GB/T 901-1988	双头螺栓 Stud bolt	6	SS304		标准件 Standard Parts
5	GB/T 6170-2000	螺母 Nut	6	SS304		标准件 Standard Parts
6	Q45F-16P-02	密封线 sealing line	1	PTFE/RPTFE		定制件 Customized parts
7	Q45F-16P-01	阀盖 cap	1	A351 CF8 /CF8M		
8	Q45F-16P-03	阀杆 stem	1	SS304 /SS316		定制件 Customized parts
9	Q44F-16P-08	防飞垫片 Anti-flying gasket	1	F304		借用件 Borrow Piece
10	Q44F-16P-07	填料 filler	1组	PTFE/RPTFE		
11	Q44F-16P-09	压盖 gland	1	A351 CF8		
12	GB/T 5780-2000	六角头螺栓 Hexagon head bolt	2	SS304		标准件 Standard Parts
13	GB/T 6170-2000	螺母 Nut M10	2	SS304		标准件 Standard Parts
14	Q45F-16P-12	后盖 back cover	1	A351 CF8		
15	Q45F-16P-02	密封线 sealing line	1	PTFE/RPTFE		定制件 Customized parts
16	Q44F-16P-09	阀座环 seat ring	1	A351 CF8		
17	Q45F-16P-15	密封圈 sealing ring	1	PTFE/RPTFE		定制件 Customized parts

技术要求

1. 阀门的设计与制造按GB/T 12237的规定。
2. 阀门的结构长度按GB/T 12221的规定。
3. 阀门的连接法兰按JB/T79的规定。
4. 阀门的检验与试验按GB/T 26480的规定。

Technical requirements

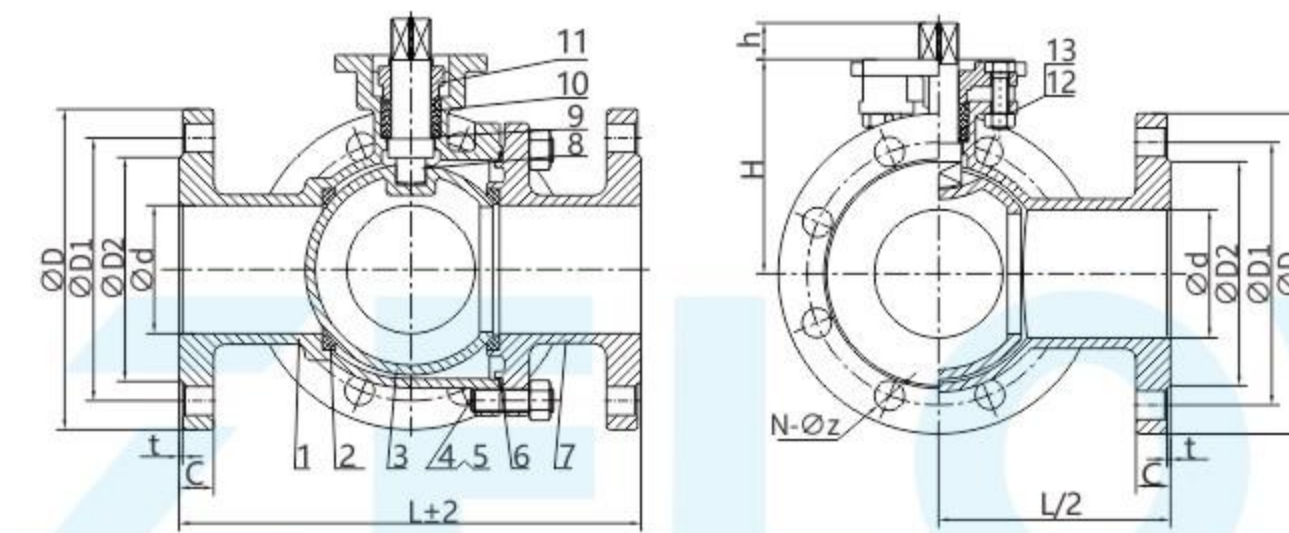
1. The design and manufacture of the valve are in accordance with the provisions of GB/T 12237.
2. The structural length of the valve is in accordance with the provisions of GB/T 12221.
3. The connecting flange of the valve shall comply with the regulations of JB/T79.
4. The inspection and test of the valve shall be in accordance with the provisions of GB/T 26480.



高平台 L型三通球阀

Mechanical Department High Platform
L type three-way ball valve

Q44F-16P



尺寸 Dimensions (化工部 Ministry of Chemical Industry)

SIZE	d	D	D1	D2	C	t	L	H	A	B	R	r	K*K	h	N-φz
1"	25	115	85	65	18	2	180	70	70	/	3.5	/	11*11	12	4-φ14
1¼"	32	140	100	78	18	2	200	80	70	/	4.5	/	11*11	12	4-φ18
1½"	40	150	110	85	18	3	220	85	70	50	4.5	3.5	14*14	15	4-φ18
2"	50	165	125	100	18	3	240	100	70	/	4.5	/	17*17	18	4-φ18
2½"	65	185	145	120	18	3	260	110	102	70	5.5	4.5	17*17	18	6-φ18
3"	80	200	160	135	20	3	280	135	102	70	5.5	4.5	19*19	20	8-φ18
4"	100	220	180	155	20	3	320	150	102	70	5.5	4.5	22*22	23	8-φ18

尺寸 Dimensions (机械部 Machinery Department)

Unit:mm

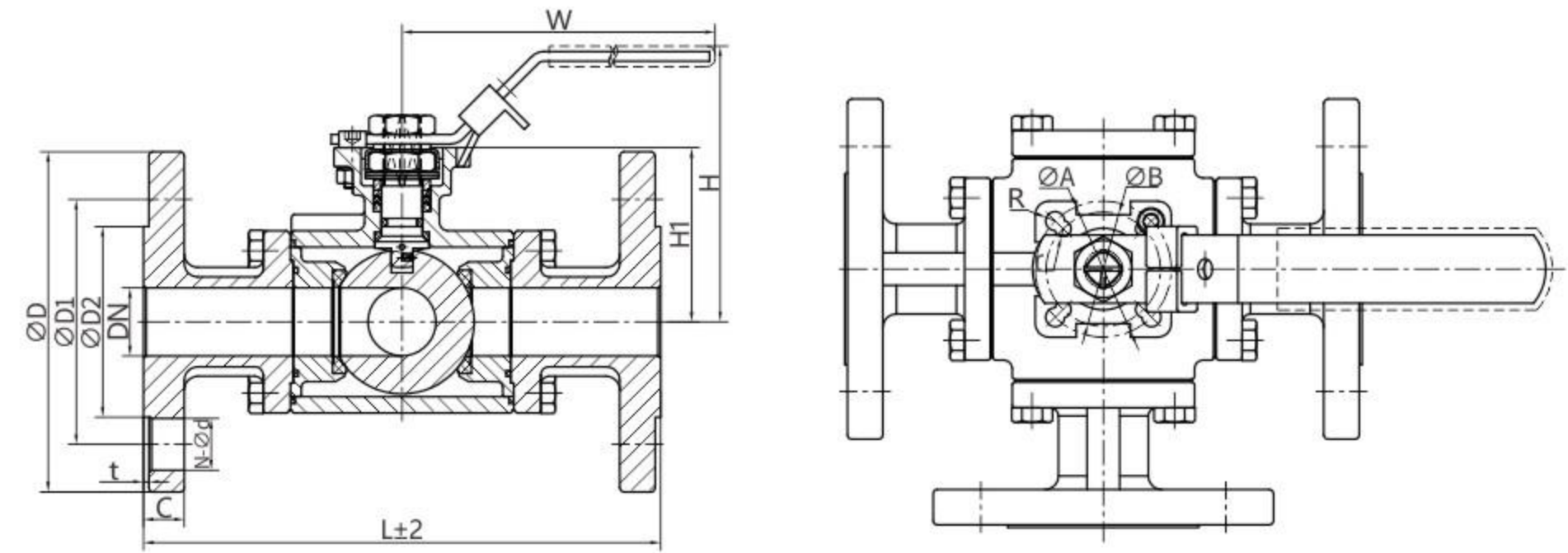
SIZE	d	D	D1	D2	C	t	L	H	A	B	R	r	K*K	h	N-φz
1"	25	115	85	65	14	2	180	62	70	/	3.5	/	11*11	12	4-φ14
1¼"	32	135	100	78	16	2	200	72	70	/	4.5	/	11*11	12	4-φ18
1½"	40	145	110	85	16	3	220	78	70	/	4.5	/	14*14	15	4-φ18
2"	50	160	125	100	16	3	240	86	70	/	4.5	/	17*17	18	4-φ18
2½"	65	180	145	120	18	3	260	102	102	70	5.5	4.5	17*17	18	4-φ18
3"	80	195	160	135	20	3	280	115	102	70	5.5	4.5	19*19	20	8-φ18
4"	100	215	180	155	20	3	320	137	102	70	5.5	4.5	22*22	23	8-φ18

三通/四通球阀
Three/four-way ball valve

Q44F/Q45F-16P
Q44F/Q45F-150LB
Q44F/Q45F-10K

标准/STANDARDS:

设计标准/Design:ANSI B16.34,API608,
壁厚标准/Wall Thickness:ANSI B16.34,EN1256-3,
螺纹标准/Pipe Thread:ANSI B1.20.1;BS21;DIN 2999/259;ISO 288/1;
ISO7/1;JIS B0203,
承插焊标准/ASME B16.10,
对焊端标准/ASME B16.25/ISO1127/EN12627,
法兰端标准/ASME B16.5 CLASS 150/300;
EN1092-1(HG20592 GB/T9113) PN10-PN40;
JIS B2238 10K/20K,
检测标准/Inspection&Testing:API 598;EN12266.



明细表 Materials list				
NO	名称 Part name	材质表 Material		
1	阀盖 Bonnet	A351 CF8	A351 CF8M	A216 WCB
2	密封线一 Gasket一	PTFE/RPTFE		
3	密封环 Seat shelf	A351 CF8	A351 CF8M	A216 WCB
4	球体 Ball	SUS304/SUS316		
5	阀体 Body	A351 CF8	A351 CF8M	A216 WCB
6	密封圈 Seat	PTFE/RPTFE/PPL/PEEK		
7	密封线二 Gasket二	PTFE/RPTFE		
8	螺栓 Bolt	SUS304		
9	防静电弹簧 Anti static device	SUS304		
10	阀杆 Stem	SUS304/SUS316		
11	减磨垫 Stem washer	PTFE/RPTFE		
12	O型圈 O-ring	FKM/VITON		
13	V型填料 V-ring packing	PTFE/RPEFE		
14	压盖 Gland	SUS304		
15	碟簧 Spring	SUS301		
16	定位螺钉 Stop bolt	SUS304		
17	阀杆螺母 Stem nut	SUS304		
18	防松盖 Stop lock cap	SUS304		
19	垫片 Washer	SUS304		
20	手柄 Handle	SUS304		
21	封盖 Capping	A351 CF8	A351 CF8M	A216 WCB

尺寸 Dimensions (国标三通、四通法兰球阀/National standard three-way, four-way flange ball valve) Unit:mm

SIZE	DN	L	D	D1	D2	t	C	N-φd	H	H1	W	A	B	R	r
DN15	15	152	95	65	45	2	16	4-φ14	75	44	134	42	36	3	3
DN20	20	167	105	75	55	2	18	4-φ14	90	56.5	134	50	42	3.5	3
DN25	25	190	115	85	65	2	18	4-φ14	102	64	170	50	42	3.5	3
DN32	32	208	140	100	78	2	18	4-φ18	124	78	215	70	50	4.5	3.5
DN40	38	230	150	110	85	3	18	4-φ18	150	96	300	102	70	6	5
DN50	50	254	165	125	100	3	20	4-φ18	158	100	300	102	70	6	5

尺寸 Dimensions (美标三通、四通法兰球阀/American standard three-way, four-way flanged ball valve) Unit:mm

SIZE	DN	L	D	D1	D2	t	C	N-φd	H	H1	W	A	B	R	r
1/2"	15	152	90	60.5	35	2	10	4-φ16	75	44	134	42	36	3	3
3/4"	20	167	100	70	43	2	11	4-φ16	90	56.5	134	50	42	3.5	3
1"	25	190	110	79.5	51	2	12	4-φ16	102	64	170	50	42	3.5	3
1 1/4"	32	208	115	89	63.5	2	13	4-φ16	124	78	215	70	50	4.5	3.5
1 1/2"	38	230	125	98.5	73	2	15	4-φ16	150	96	300	102	70	6	5
2"	50	254	150	120.5	92	2	16	4-φ19	158	100	300	102	70	6	5

尺寸 Dimensions (日标三通、四通法兰球阀/Japanese standard three-way, four-way flange ball valve) Unit:mm

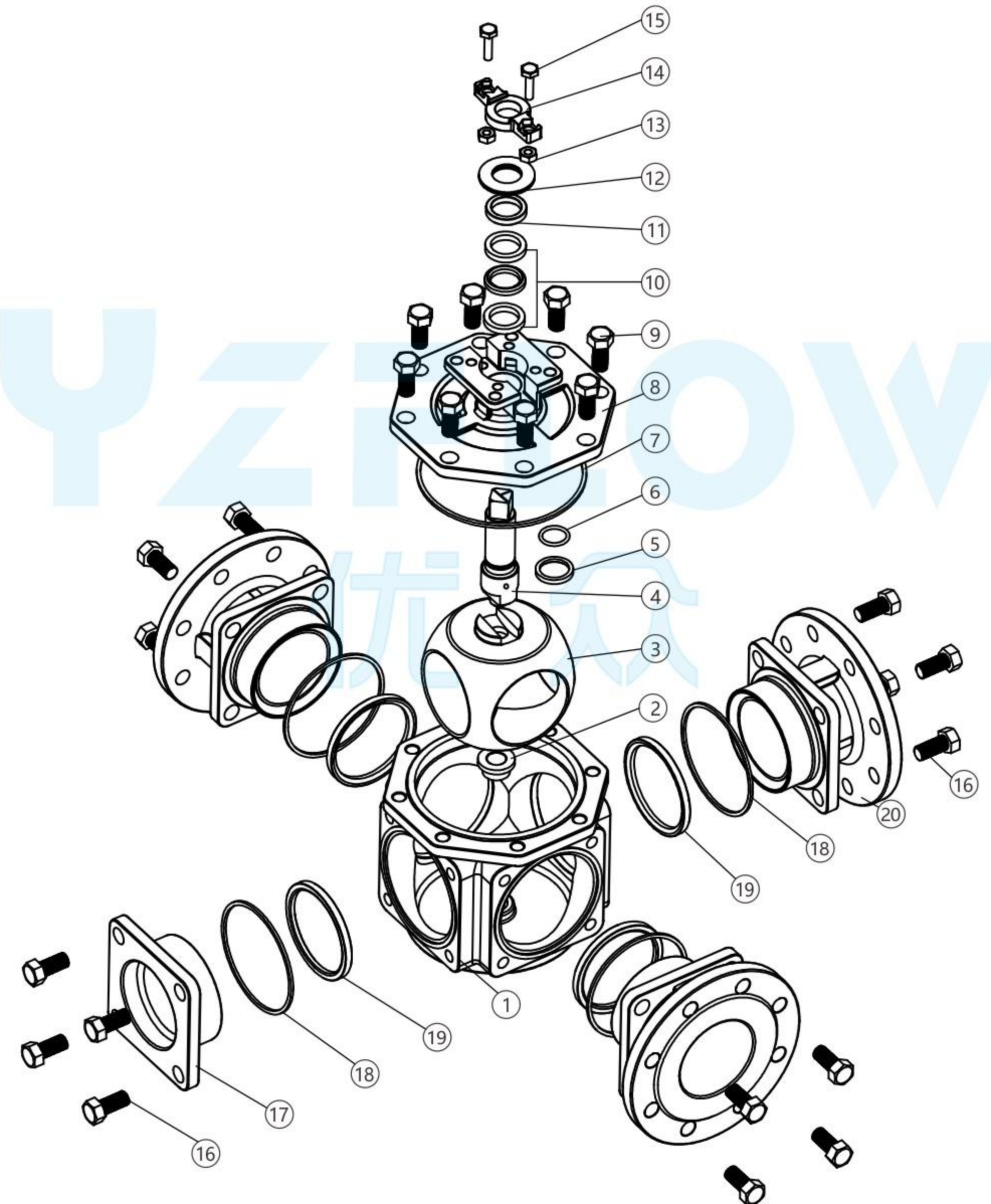
SIZE	DN	L	D	D1	D2	t	C	N-φd	H	H1	W	A	B	R	r
1/2"	15	152	95	70	52	1	12	4-φ15	75	44	134	42	36	3	3
3/4"	20	167	100	75	58	1	14	4-φ15	90	56.5	134	50	42	3.5	3
1"	25	190	125	90	70	1	14	4-φ19	102	64	170	50	42	3.5	3
1 1/4"	32	208	135	100	80	2	16	4-φ19	124	78	215	70	50	4.5	3.5
1 1/2"	38	230	140	105	85	2	16	4-φ19	150	96	300	102	70	6	5
2"	50	257	155	120	100	2	16	4-φ19	158	100	300	102	70	6	5

三通/四通球阀

Three/four-way ball valve

Q44F/Q45F-16P

序号 Number	名称 Name	材质表 Material		
1	阀体 Body	A351 CF8	A351 CF8M	A216 WCB
2	轴套 Bearing	TFM1600	TFM1600	TFM1600
3	球体 Ball	SS304	SS316	SS304
4	阀杆 Stem	SS304	SS316	SS304
5	阀杆填料 StemWasher	TFM1600	TFM1600	TFM1600
6	O型圈 O-Ring	VITON (KFM)	VITON(KFM)	VITON(KFM)
7	密封线 Gasket	TFM1600	TFM1600	TFM1600
8	平台支架 Bracket	A351 CF8	A351 CF8M	A216 WCB
9	螺栓 Bolt	SS304	SS304	SS304
10	V型填料 V-Ring Packing	TFM1600	TFM1600	TFM1600
11	压盖 Gland	SS304	SS304	SS304
12	蝶簧 Belleville Washer	SS301	SS301	SS301
13	螺母 Nut	SS304	SS304	SS304
14	压板 Gland Flange	A351 CF8	A351 CF8M	A216 WCB
15	螺栓 Bolt	SS304	SS304	SS304
16	螺栓 Bolt	SS304	SS304	SS304
17	阀盖 Cap	A351 CF8	A351 CF8M	A216 WCB
18	密封线 Gasket	TFM1600	TFM1600	TFM1600
19	阀座 Seat	TFM1600	TFM1600	TFM1600
20	阀盖 Cap	A351 CF8	A351 CF8M	A216 WCB



三通/四通球阀
Three/four-way
ball valve

Q44F/Q45F-16P

标准/STANDARDS:

设计标准/Design DIN 3357,ANSI B16.34,BS5351
结构长度/Face to face: 企业标准
法兰标准/End: DIN 2633,(HG20592,GB/9113)PN10-PN40
ANSI B16.5 CLASS 150/300
检测标准/Testing: API 598,EN12266
平台标准/Mounting pad: ISO 5211

技术要求

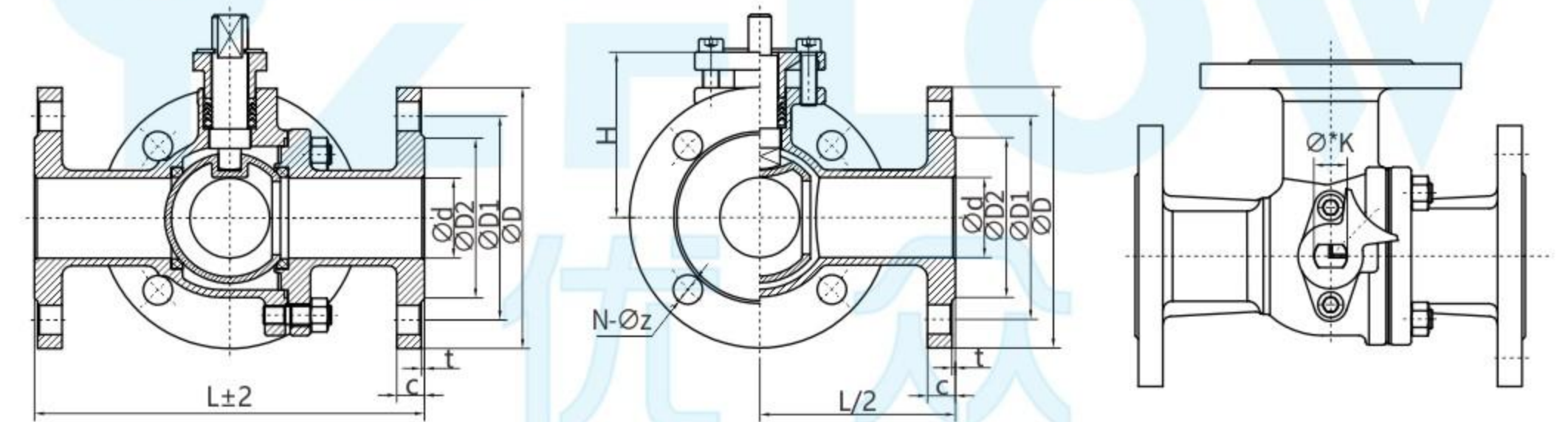
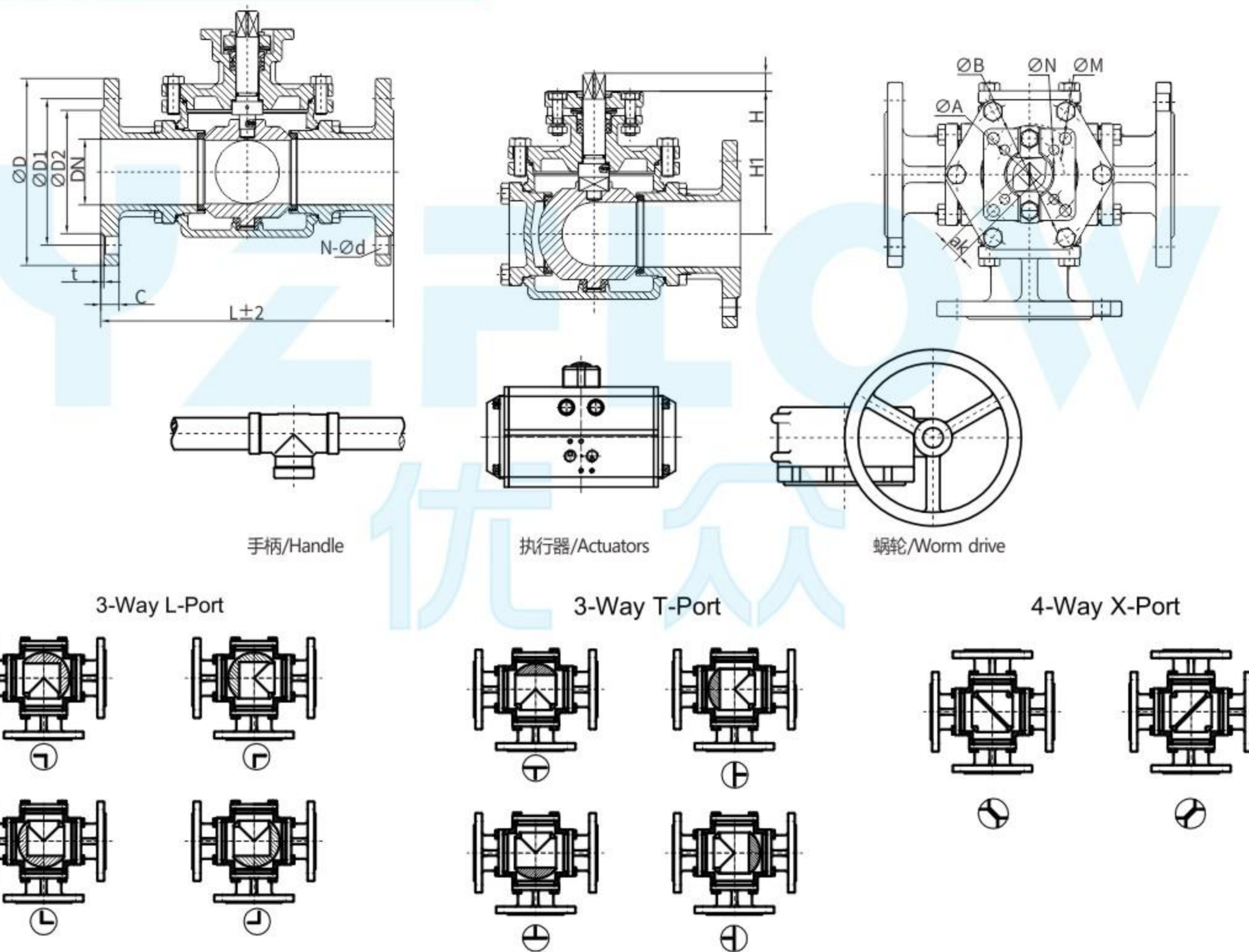
1. 阀门的设计与制造按GB/T 12237的规定。
2. 阀门的结构长度按GB/T 12221的规定。
3. 阀门的连接法兰按JB/T79的规定。
4. 阀门的检验与试验按GB/T 26480的规定。

Technical requirements

1. The design and manufacture of the valve are in accordance with the provisions of GB/T 12237.
2. The structural length of the valve is in accordance with the provisions of GB/T 12221.
3. The connecting flange of the valve shall comply with the regulations of JB/T79.
4. The inspection and test of the valve shall be in accordance with the provisions of GB/T 26480.

手动三通法兰球阀
Manual 3-Way Flanged
Ball Valve

Q44F-16P



尺寸 Dimensions

Unit:mm

SIZE	DN	D	D1	D2	t	C	N-φd	L	L1	H	H1	K	A	B	M	N
2½"	64	185	145	122	3	18	4-φ18	290	145	18	135	17	70	102	12	10
3"	76	200	160	138	3	20	8-φ18	310	155	18	140	17	70	102	12	10
4"	96	220	180	158	3	20	8-φ18	352	176	22	175	22	102	125	14	12
5"	122	250	210	188	3	22	8-φ18	420	210	27	203	22	102	125	14	12
6"	147	285	240	212	3	22	8-φ22	510	255	36	260	27	140	125	18	16

性能规范
Performance Specifications

公称压力 Nominal pressure		PN16					
公称通径 Nominal diameter		DN25-100					
试验压力 Test pressure	强度试验 Strength test	2.4	Mpa	试验介质 Test medium	水 Water	试验温度 Test temperature	常温 Normal Temperature
	密封试验 Seal test	1.8					
	气密封试验 Air tightness test	0.6					
适用介质 Applicable media		水、油品等 water oil etc					
最高工作温度 Maximum operating temperature		-29~120°C					

手动三通法兰球阀

Manual Three-Way Flanged Ball Valve

Q45F-16P

技术要求

1. 阀门的设计与制造按GB/T 12237的规定。
2. 阀门的结构长度按GB/T 12221的规定。
3. 阀门的连接法兰按JB/T79的规定。
4. 阀门的检验与试验按GB/T 26480的规定。

Technical requirements

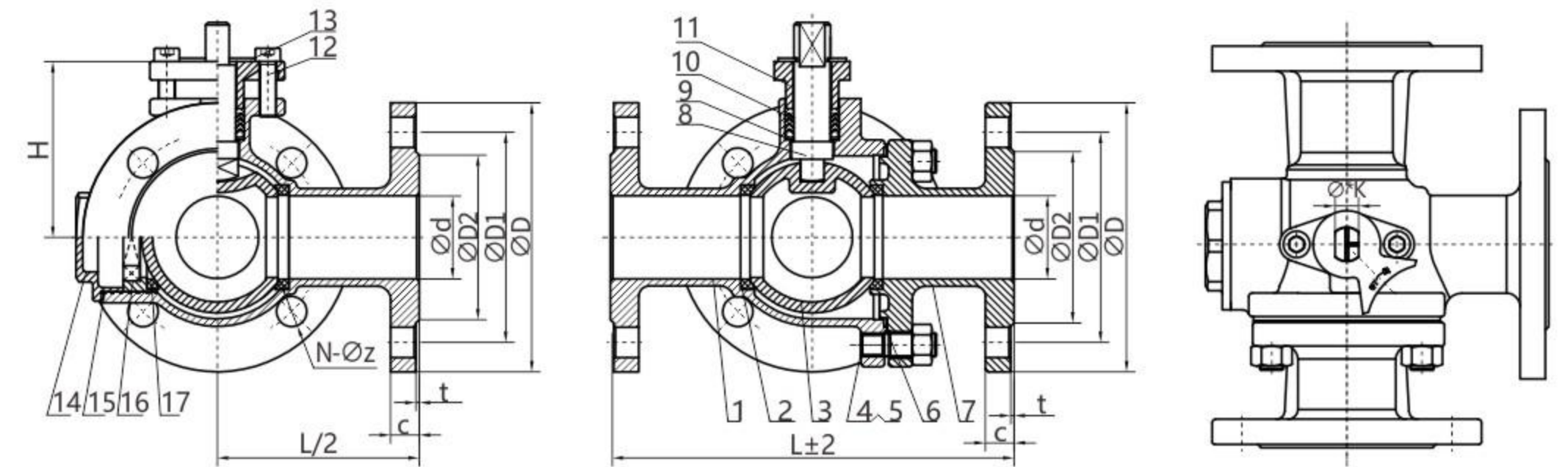
1. The design and manufacture of the valve are in accordance with the provisions of GB/T 12237.
2. The structural length of the valve is in accordance with the provisions of GB/T 12221.
3. The connecting flange of the valve shall comply with the regulations of JB/T79.
4. The inspection and test of the valve shall be in accordance with the provisions of GB/T 26480.

性能规范

Performance Specifications

公称压力 Nominal pressure		PN16					
公称口径 Nominal diameter		DN25-100					
试验压力 Test pressure	强度试验 Strength test	2.4	Mpa	试验介质 Test medium	水 Water	试验温度 Test temperature	常温 Normal Temperature
	密封试验 Seal test	1.8			空气 Air		
	气密封试验 Air tightness test	0.6					
适用介质 Applicable media		水、油品等 water oil etc					
最高工作温度 Maximum operating temperature		-29~120°C					

序号 Number	代号 Code	名称 Name	数量 Quantity	材料 Material	重量 Weight		备注 Remark
1	Q45F-16P-05	阀体 valve body	1	A351 CF8 /CF8M	单件 single piece	总计 total	
2	Q45F-16P-15	密封圈 sealing ring	3	PTFE/RPTFE			定制件 Customized parts
3	Q45F-16P-10	球体 sphere	1	SS304/SS316			
4	GB/T 901-1988	双头螺栓 Stud	6	SS304			标准件 Standard Parts
5	GB/T 6170-2000	螺母 nut	6	SS304			标准件 Standard Parts
6	Q45F-16P-02	密封线 sealing line	1	PTFE/RPTFE			定制件 Customized parts
7	Q45F-16P-01	阀盖 cap	1	A351 CF8 /CF8M			
8	Q45F-16P-03	阀杆 stem	1	SS304 /SS316			定制件 Customized parts
9	Q44F-16P-08	防飞垫片 Anti-flying gasket	1	F304			借用件 Borrow Piece
10	Q44F-16P-07	填料 filler	1组	PTFE/RPTFE			
11	Q44F-16P-09	压盖 gland	1	A351 CF8			
12	GB/T 5780-2000	内六角头螺栓 Hexagon socket head bolt	2	SS304			标准件 Standard Parts
13	Q45F-16P-17	定位锁块 positioning lock block	1	SS304			标准件 Standard Parts
14	Q45F-16P-12	后盖 back cover	1	A351 CF8			
15	Q45F-16P-02	密封线 sealing line	1	PTFE/RPTFE			定制件 Customized parts
16	Q44F-16P-09	阀座环 seat ring	1	A351 CF8			
17	Q45F-16P-15	密封圈 sealing ring	1	PTFE/RPTFE			定制件 Customized parts



尺寸 Dimensions (机械部 Machinery Department)

SIZE	d	D	D1	D2	C	t	L	H	φ*K	N-φz
1"	25	115	85	65	14	2	180	72	14*9	4-φ14
1¼"	32	135	100	78	16	2	200	85	18*12	4-φ18
1½"	40	145	110	85	16	3	220	90	18*12	4-φ18
2"	50	160	125	100	16	3	240	105	22*14	4-φ18
2½"	65	180	145	120	18	3	260	112	22*15	4-φ18
3"	80	195	160	135	20	3	280	125	24*16	8-φ18
4"	100	215	180	155	20	3	320	155	28*17	8-φ18

尺寸 Dimensions (化工部 Ministry of Chemical Industry)

SIZE	d	D	D1	D2	C	t	L	H	φ*K	N-φz
1"	25	115	85	65	18	2	180	72	14*9	4-φ14
1¼"	32	140	100	78	18	2	200	85	18*12	4-φ18
1½"	40	150	110	85	18	3	220	90	18*12	4-φ18
2"	50	165	125	100	18	3	240	105	22*14	4-φ18
2½"	65	185	145	120	18	3	260	112	22*15	6-φ18
3"	80	200	160	135	20	3	280	130	24*16	8-φ18
4"	100	220	180	155	20	3	320	155	28*17	8-φ18